

Sew What Designs

3D /4D Organizer Tutorial Add-on

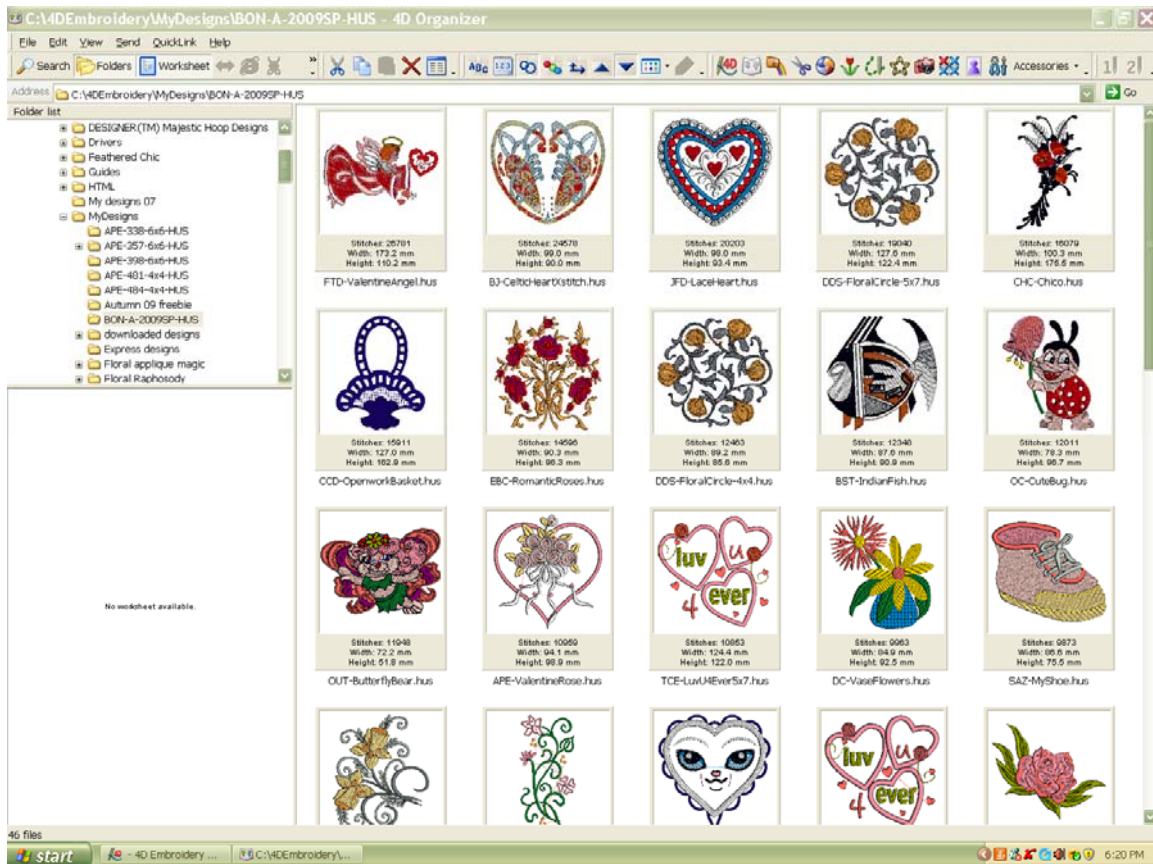
Converting Designs

Quite a few people use the 3D or 4D software to convert designs into format other than those required for the Husqvarna Viking or Pfaff machines. The software was intended to be used by owners of most embroidery machines in the market. The one exception to this is the ART format used by Bernina machines. You cannot convert designs to this format without the original Bernina software itself. All other embroidery formats can be easily converted from one type to another.

If you want to use ART format designs you can use OESD Sizing Magician software available with any purchase of any Artista embroidery design CD. This will allow you to open ART format designs and convert them to other formats. However it will not work in reverse. The advantage of this software is that it is really excellent for resizing ART format designs.

To convert designs to another format in the 4D or 3D embroidery software all you need to do is:

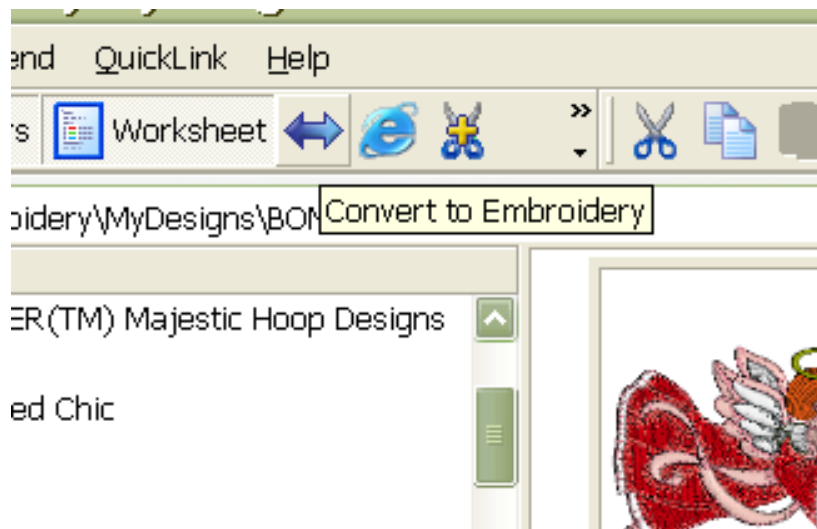
- ❖ Open 3D/4D Organizer



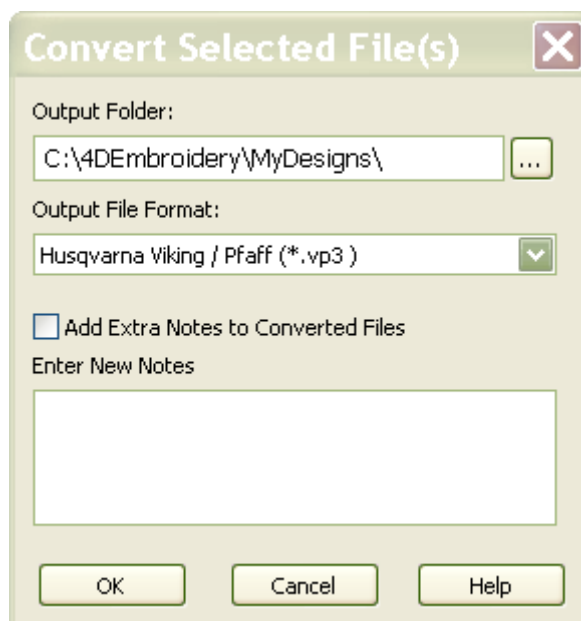
- ❖ Navigate to the location where the designs you want to convert are located.
- ❖ Select one or more designs using the control or shift key.




- ❖ Click the  Convert to embroidery icon

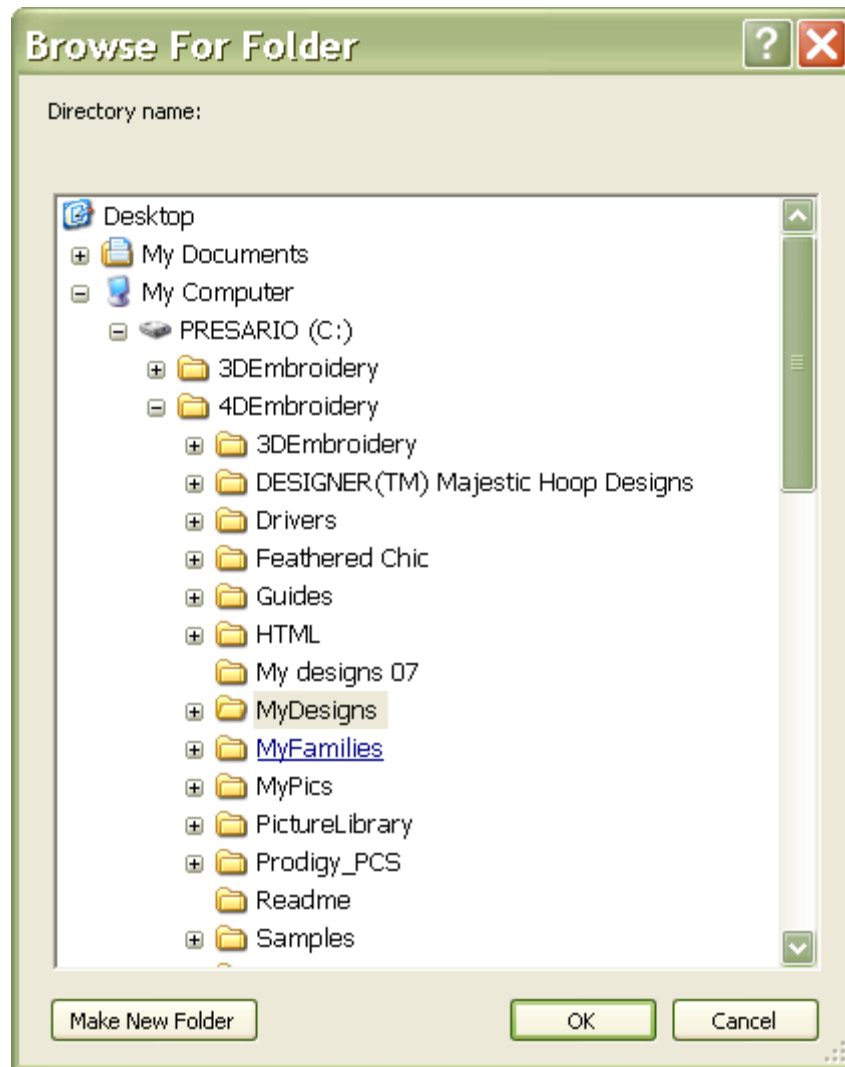



- ❖ The convert selected Files(s) window will open.



This is where you choose the format that you want to convert the files into – **the Output File format**- and the location where you want to save the converted files- **Output Folder**. This makes a copy of the files in a new format and will not alter the existing files at all.

- ❖ To select the Output Folder click on the tool at the right hand side of the small window  and the Browse for folder window will appear. You can navigate through your computer to find the folder that you would like to store the converted files in.



You can even make a new folder on your computer by selecting the  link. This allows you to create and name a folder for your files if you have not thought to make one already.

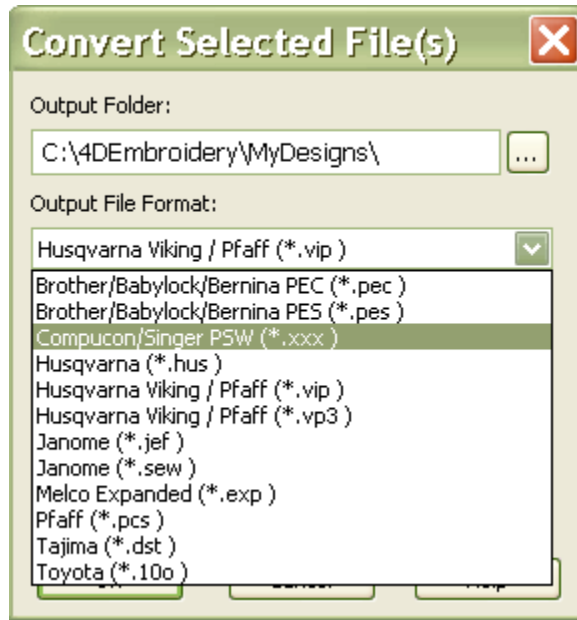
When you have selected the folder you want:

- ❖ Click OK

To select the output file format click on the down arrow



This will allow you to see a number of different embroidery design formats.



When you have chosen the format and location just click OK and the designs will be converted.