

SEWING BAG INSTRUCTIONS

REQUIREMENTS

Note: Fabric quantity is based on 110cm (44in) wide.

1 metre fabric for bag

1 metre contrast fabric for bag lining

Pellon or similar iron-on batting

Stabilizer

Embroidery threads in a variety of colours

Bobbinfil

Construction thread

General sewing requirements - pins, scissors, tape measure etc.



CUTTING

Lining and block Material

Fold material selvage to selvage

Cut one strip 24.5 inches for bag lining

Cut 2 strips 8 inches**or.. the width required to hoop the fabric in your embroidery machine
cross cut 9 strips 8 inch long for embroidering your blocks

Pocket (optional)

Decide on the finished pocket size you require, then add 1/2inch to each side and bottom,
then an additional 2.5 inches to the top (to enable fold over)

The measurements I used was

Finished pocket size 8.5 inches wide 10.5 inches deep

Cutting size

1 piece 9.5 by 13.5 inches **I'd make it 10 by 14 if embroidering the pocket

Main Fabric

Fold material selvage to selvage

Cut four 2 inch strips, then

Cross cut 3 strips 18.5 inches for long front borders

Cross cut 6 strips 5.5 inches for short front border

Cut one 19.5 strip - from this

Cross cut 1 strip 18.5 inches for Front Panel

Cross cut 2 strips 6.5 inches for side panels

Cross cut 1 additional panel 6.5 inches - then take off 1 inch to make 18.5 for bottom panel

Cut one 3 inch strip for handles

EMBROIDERY

FRONT PANEL

Using your block fabric (cut to the applicable size required for your embroidery machine), stabilise, hoop then embroider the 9 sewing designs. Color charts are included in your design file.

Once completed, press each block, then centre design and cut to 5 1/2 inch blocks.

Follow the photo, or determine the placement of each block as your desire

POCKET

Using your pocket fabric , stabilise, hoop then embroider design.

Once completed, press block, then centre design and cut to 9.5 by 13.5 inches

CONSTRUCTION

$\frac{1}{4}$ inch seam allowances used throughout

Front Panel

1. Using the 6 small border pieces, pin, then stitch either side of the middle block, then attach a design to the left, then a design to



the right

2. Using the 3 long border pieces, pin then stitch the 3 panels together - as per photo - attach a border to the top, then join the 2 other panels.



Pocket (Optional)

1. Machine neaten all 4 edges of pocket
2. To create the top of the pocket, fold 2.5 inches back towards right side and press.
3. Stitch a $\frac{1}{2}$ inch seam around the 3 sides of the pocket as per photo.
(This gives you a perfect top edge, and a guide for turning the pocket neatly)
4. Turn the flap to the right side, clip edges as per picture (reduces bulk) and top stitch close to the very top edge. **You can get very fancy and use your decorative stitches on your machine to embellish your

pocket.

5. Press, the 2 side and bottom edges to the wrong side (following your stitching lines.
6. Determine centre of pocket (I simply press the pocket in $\frac{1}{2}$), then do the same with your back panel.
7. Place your pocket on the panel matching centres, then pin and stitch your pocket to the back panel.

Attach sides

1. Pin, then stitch the 2 side panels to the front, then back panel (do not join at this stage)
2. Press all seam allowances flat
3. Iron pellon (or batting) to the completed panel - extend the pellon 1 inch over the top edge of the bag, as per the photo.
4. Complete any quilting you wish to do - I simply quilted in the ditch around each block



Attach bottom

5. Press pellon to wrong side of bottom panel.
6. Pin, then stitch the bottom panel to the front - begin and end your stitching $\frac{1}{4}$ inch from each edge.
7. Pin, then stitch bottom panel to the back panel - begin and end your stitching $\frac{1}{4}$ from each edge
8. Complete bottom by matching, pinning and stitching the 2 short sides
9. Carefully trim the pellon away from each stitched seam, to reduce bulk.

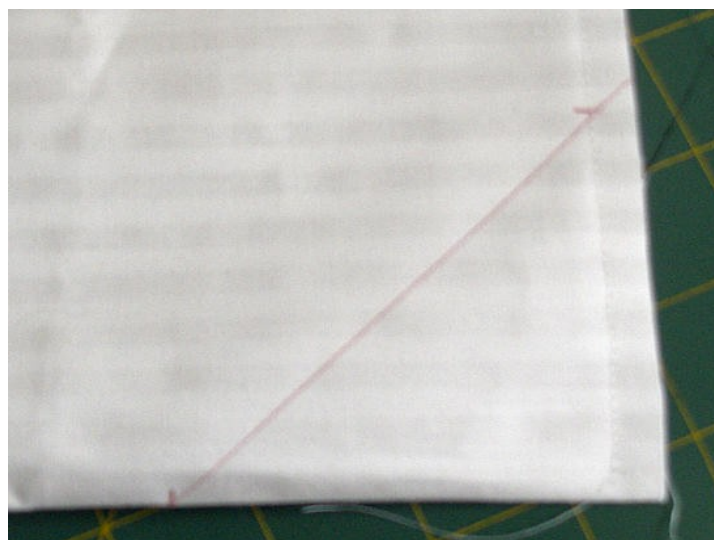
Handles

1. With wrong side facing, press $\frac{1}{4}$ inch towards centre, then fold handle in $\frac{1}{2}$ (all edges now encased)
2. Pin, then stitch close to the edge
3. Cut strip in half to make 2 handles
4. Pin to right side of bag as per the photo.



Lining

1. Fold panel in half matching short side to short side.
2. Pin, then stitch down 2 long sides (remember to leave about a 10cm gap so you can turn the bag later)
3. As per photo, mark 3 inches out along bottom and side edges, then draw a line connecting the 2 - use this line to stitch along to create



lining bottom.

4. Cut away the excess 'triange'
5. Machine neaten all edges.

Attaching Lining to bag

6. Place the Bag inside the Bag Lining with right sides together, matching the lining seam to the middle of bag side panels, and ensuring the bag handles are still in place, and facing inwards.
7. Pin, then stitch the top seam.
8. Turn the bag through to the right side through the opening left in the lining seam.
9. Press the seam allowance towards the lining.
10. Turn the Bag Lining inside the Bag along the self Binding Foldline. (the extra 1 inch of pella)
11. From the right side of the Bag, stitch-in-the-ditch in the Binding seam line, then stitch-in the ditch along the top edge of the main fabric stitching the handles down as you do his. Press.
12. Hand, or machine stitch the opening in the lining side seam.

Embelish!!

Add all your special buttons or crystals to add some bling to your sewing bag. I've just added some buttons.



