

©Embroidering QT Pie Stick Figures on Sweaters

For this FREE Tutorial we are using the QT Pie Stick Figure Embroidery Collection which is filled with the cutest stick children and their pets wearing adorable clothes that are sure to put a smile on your face. Use the designs on a child's school sweater and personalize it by adding the names of her friends or teachers. Make the ultimate Teacher's gift by embroidering school children on a ready-made sweater. The possibilities are endless for this collection.

The blue sweater was purchased from Sears at the Lands End Department. This was a Christmas gift for my Mother-In-Law which displays all of her wonderful grandchildren (including my girls). The QT Pie Collection was created just for my Mother-In-Law's grandchildren sweater.

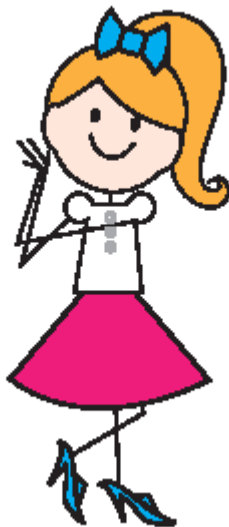


Please send me your photos of any new items you have created with the QT Pie Collection & you could win a free CD of your choice!

Stabilize the inside of the sweater by using Sulky TenderTouch™ or a tricot fusible interfacing. Iron the interfacing to the wrong side of the left & right fronts using large blocks of fabric. Please note that sweaters are less stable horizontally (around the belly) and more stable vertically (from shoulders to hemline) so it is **important** that you fuse the TenderTouch™ horizontally so it will stabilize the sweater. In other words, the stable (or less stretchy) direction of the interfacing will go around the stretchy stomach area, thus stabilizing the sweater knit fabric for pucker free embroidery & perfect outline embroidery stitches.



Embroidering on sweaters – several methods can be used to embroider on sweaters. For the Pink Poodle Sweater I used a fusible or sticky mesh water soluble stabilizer on the wrong side of the sweater that has been prepped with TenderTouch™. Hoop Sulky Soft’ n Sheer™ stabilizer and baste the sweater to the hooped stabilizer. Lay a piece of Solvy™ over the sweater before beginning any embroidery. Try using Sulky 30-weight black rayon thread for the outlines of the stick kids; this gives a bolder look which works well with lofty sweater knit fabric.



- Mirror image the “Ponytail” design and print a template & position over the upper left side of the sweater. Mark the template lines on the sweater. Print a paper template of the “Poodle” design and position on lower right side of the sweater and mark the template lines on the sweater.
- Lay a piece of Solvy™ on top of the hoop and embroidery the “Ponytail” girl design colors #1-6. You will need to insert the end of a **10” piece of black gingham spaghetti bias** underneath the hands as they embroider during color #7. To do so, trim one end to a point and watch the machine carefully as it stitches the arms and hands. Stop the machine as it finishes the hands and place the point end of the spaghetti bias over the hands (you can use a piece of Wonder Tape to hold the point in place). On your

machine, **back up the stitches so you can embroider the hands again**, this time catching the bias tubing so it looks like she is holding a leash. Continue with the rest of color # 7.

- Cut an **18" piece of spaghetti bias tubing** to use for the poodles leash. Lay a piece of Solvy on top of the hoop before embroidering the "Poodle" design. For this piece it might be helpful to test embroider the poodle on scrap fabric so you will know exactly where to add the bias tubing so it looks like a leash is attached to the collar area. **During color # 1, the bias is inserted under the lower half of the ear so it extends 1/2" beyond the ear into the body area as shown.** Watch closely as color # 1 embroiders and when you embroider the outer circle of the body, stop the machine and trim away any excess tubing, leaving only 1/8" inside the body. Resume the embroidery.



Gluing 101

This is the fun part which will bring back fond memories of kindergarten crafts as you glue the trims to the sweater. The glue serves as an easy way to temporary adhere the trims for easy topstitching. Roxanne's Glue Baste-It is my favorite glue which **is a must for shaping the bias** into circles. To use the glue, dispense small beads of glue on the wrong side of the spaghetti bias and finger press into place. Cover with a press cloth and iron the glue dry to shorten the dry time.

- Shape and glue the bias leash starting at the Ponytail girl. To end this piece of bias, wrap it around to the inside of the left sweater front. Shape the bias leash coming from the poodle so it curves upward forming the illusion of one long continuous leash from the poodle to the girl's hands.
- To end this piece of bias, wrap it around to the inside of the right sweater front following the same line angle as the "Ponytail" bias. After the glue is dry, topstitch the bias in place using monofilament thread and a small zigzag stitch.



Blue Sweater Tips



- Prep the inside of the sweater as stated on page 1 using a fusible tricot interfacing. Fuse large blocks on the inside of the sweater fronts.

- Use a software program to add names or cute phrases to each stick figure as shown and combine to create a new design. Print a template using Floriani's fusible template paper (templates are like large stickers that will adhere right to the sweater without shifting or sliding during the hooping process).
- Arrange the templates in a pleasing manner on the sweater fronts. For this project I left the templates on the sweater until I was ready to embroider each design so I didn't get confused & embroider the wrong design.
- Hoop sticky stabilizer (& remove the paper) and lay the hoop over the grid marks on a large cutting mat, aligning the grid with the placement marks on the hoop. Center the design matching up the placement marks on the templates. Once the hoop is on the machine & the design is centered, remove the template & lay a piece of Solvy on top of the hoop & baste the sweater to the hoop using an automatic basting feature on your machine. If the sweater wants to pull up off the stabilizer when you remove the template, place a few pins in the corner of the sweater through the sticky stabilizer (pins are underneath the templates) before placing the hoop on the embroidery arm.



If you have found this information helpful, please let me know by sending an email to hopeyoder@comcast.net.

If you have any general sewing or embroidery questions or would like to see a tutorial on a different subject matter, please let me know.

Thank you,

Hope Yoder
Designs by Hope Yoder, Inc.