



**Step by Step Guide
to setting up the
Super L GHIA TM
with the Ult/Ellageo.**

by Carolyn Keber

© Copyright 2000 secretsof.com All Rights Reserved

Step by step instructions on setting up and using your Super L GHIA™ with the Ult/Ellageo.

Are you ready for an adventure? An adventure in embroidery is certainly what you will be able to have once you have mastered this hoop.

When you first open the box that your Super Giant L Hoop it All™ arrived in you may have feel a little confused as there do not seem to be enough instructions nor enough parts that come with the hoop. I know I opened the box, took a look at it and shut the box again. I didn't even want to think about assembling this strange looking hoop. However I got brave and decided it was now or never as I had the perfect project for the hoop....my daughter's collar and cuffs on her wedding outfit.

All is well – I learnt how to use the hoop and now I hope I can help you overcome any reservations about it as well. All you need are my instructions on setting up the hoop, Embird and the following items.

In the box should be the following:

- A three piece table for your hoop and machine to sit on,
- The GHIA™ frame,
- A white plastic sliding bracket,
- Three white plastic screws,
- And a roll of heavy sticky paper.

Firstly take the three large pieces and assemble the table for your machine.

Turn off your machine and remove the embroidery arm.

Place the long base table with the short leg supports under your machine so that the machine sits exactly on top of it. There is a raised ridge which is situated on the top of the table.



Place the right rear of your machine right up to this ridge.



Once the machine is situated on the base replace the embroidery arm on your machine.



Take your GHIA™ support tables and slide them one at a time under the base and up to the edge of your machine. There are slots under the base where the tables slide.



Once you have the front support table attached repeat the procedure with the rear table.



Photo shows the support table for the Super Giant L GHIA™ attached and ready for the hoop.

Assembling the hoop.

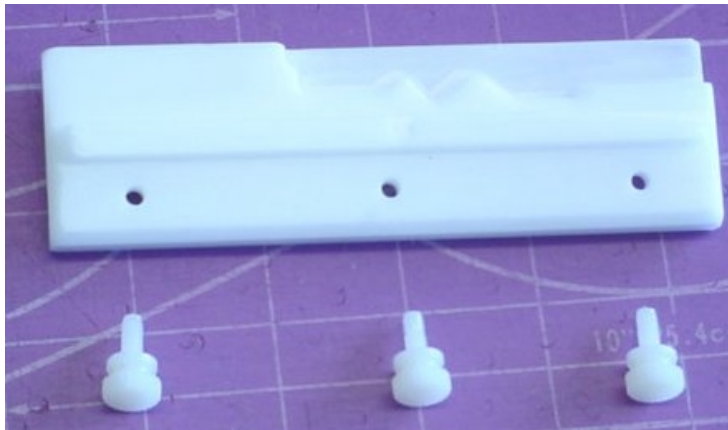
Next you need to assemble your hoop.

My reaction when I first opened the package was that there were parts missing as I could not find an inner frame for the hoop. Not having used or even seen a GHIA™ product before I was unaware that there was only the outer frame and no inner frame. However I soon discovered that I had all I needed. Check the photos below for the hoop parts.

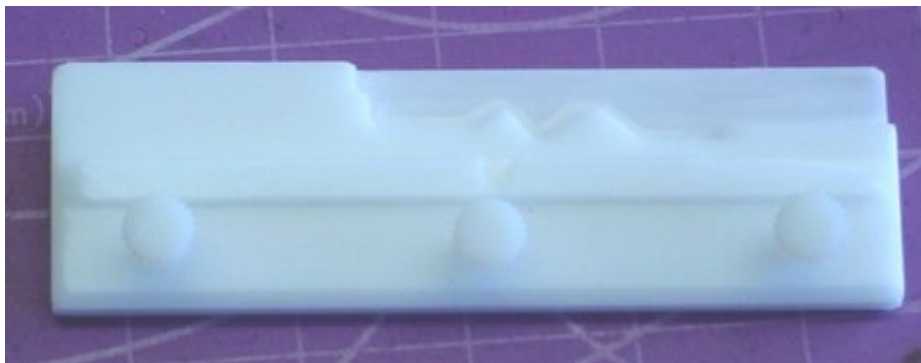
The hoop.



The slider and screws.



Place the screws into the three holes for them on the sliding bracket and screw them in until they are just secure. These screws do not screw into the holes in the rails on your hoop. They are just for tightening your plastic bracket to the hoop so that it does not move while embroidering.



The photo above shows the screws in the bracket.

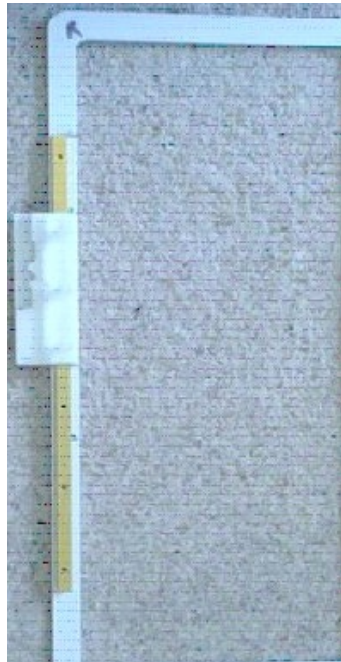
Preparing your hoop.

Embroid and GHIA™ work really well together but to get them to do so you need to know a little about how they work together first.

The GHIA™ does not come with any position markings etched into them so this is something you must do yourself.

Embroid treats this hoop as a hoop with two distinct sides to it – a **left** side and a **right** side. The reason behind the name Super L for the hoop is that the hoop is actually made up of two L shapes. A left side L and a right side L as in the photos below.

Right side L

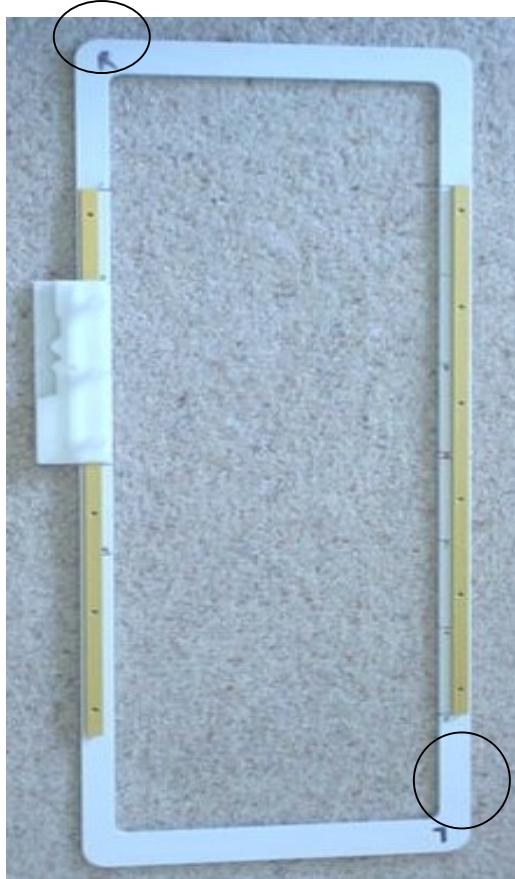


Left side L



You must mark the two sides yourself and then once these are done you need to mark the positions for each side as well. (A,B,C,D,E)

The hoop – when marked – will have a **left** side with the positions of A,B,C,D, and E. and a **right** side with the positions of A,B,C,D and E.

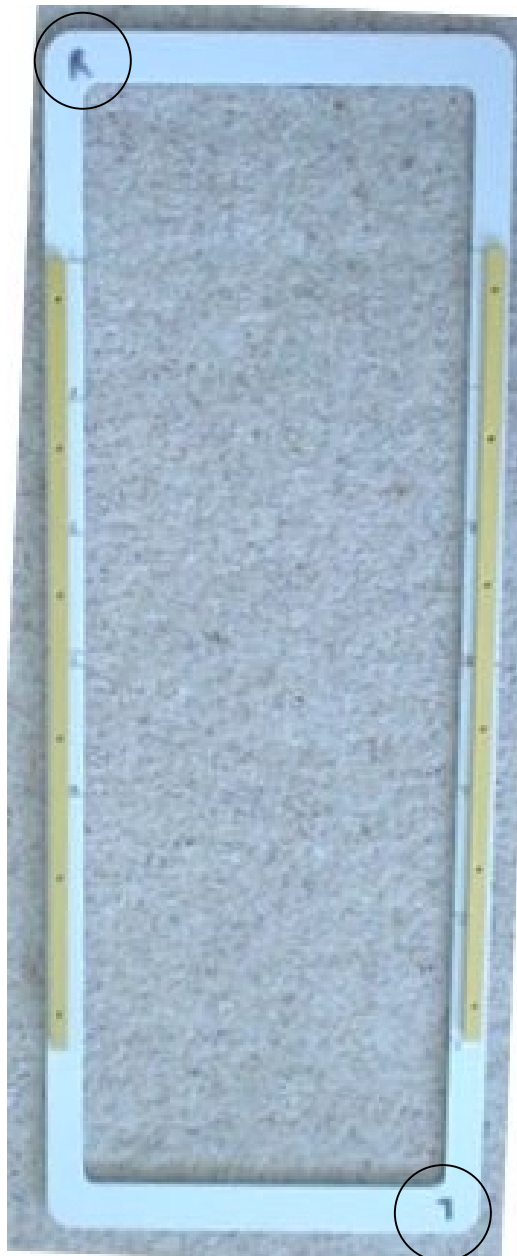


Place your hoop on a flat surface in a vertical position as shown in the photo below.



Take a permanent marking pen and in the top **left** of the hoop as shown above, mark the letter **L** on the white plastic. I have circled the letter **L** to enable you to see it better.

Now, turn your hoop around 180 degrees so that the letter **L** that you just marked on the hoop is now on the lower right as shown in the photo below.



Take your permanent market pen and mark the letter **R** on the top left of the hoop as shown above. Your hoop should look exactly like that of the photo above. (Without the circles)

Now you have your **left** and **right** sides of the hoop marked and they should look like the photo above .

It is time to move on and give each of these sides of the hoop their positional markings.

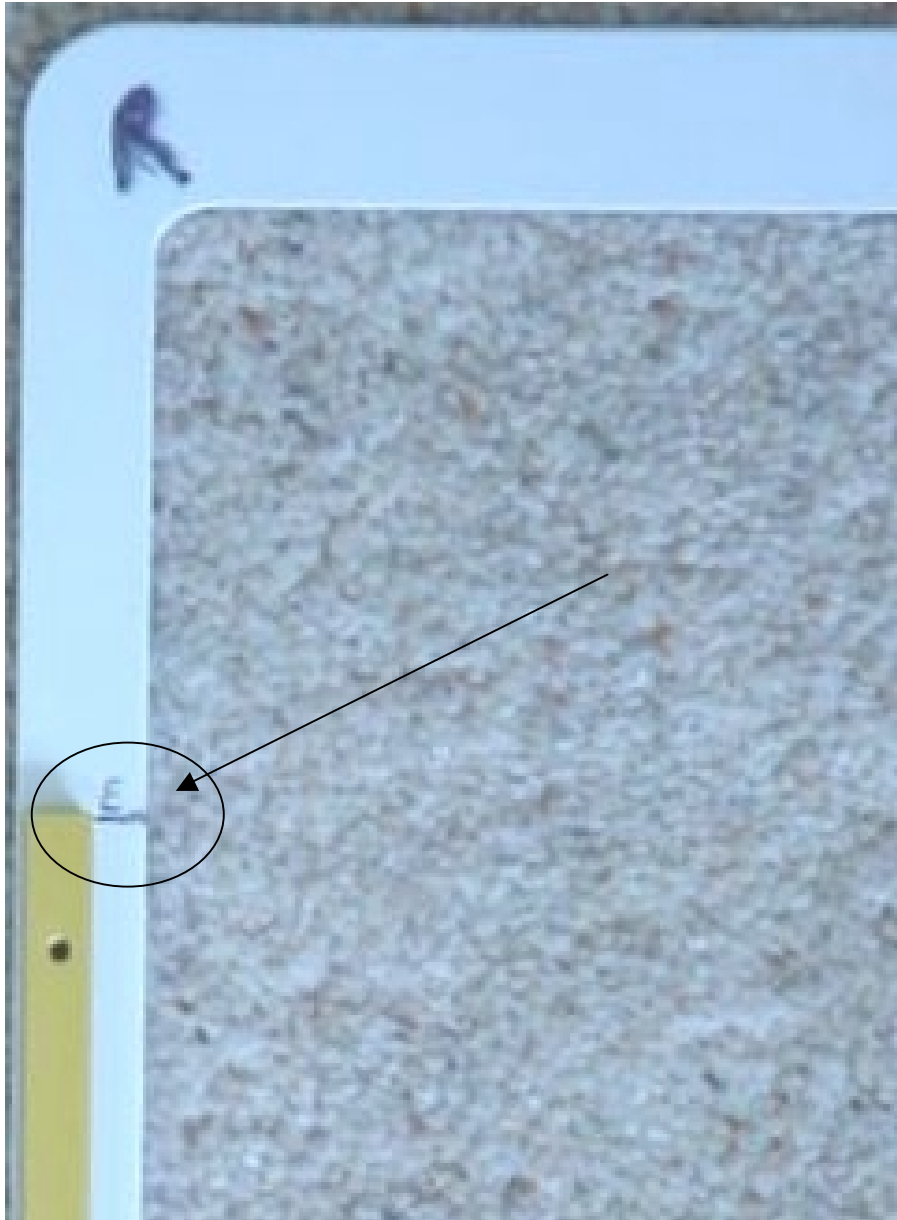
You will need a **fine permanent marking pen** for this as the lines must be thin but visible. You do not want them to wear off in time. But you also need fine lines as your measurements need to be **very** accurate and a thick pen will throw your measurements out to a certain extent.

Rotate your hoop so that the side with the **R** is on the top left hand side as shown below.



The five hoop positions are now to be marked down the left hand side of the hoop while it is in the position as shown above.

Take a ruler and starting at the top of the gold rail and **exactly** in line with it mark your first position. Draw the small line that is **horizontal** to the top of the rail. Mark this first line as position **E** on the white plastic.



That's the first bit done!

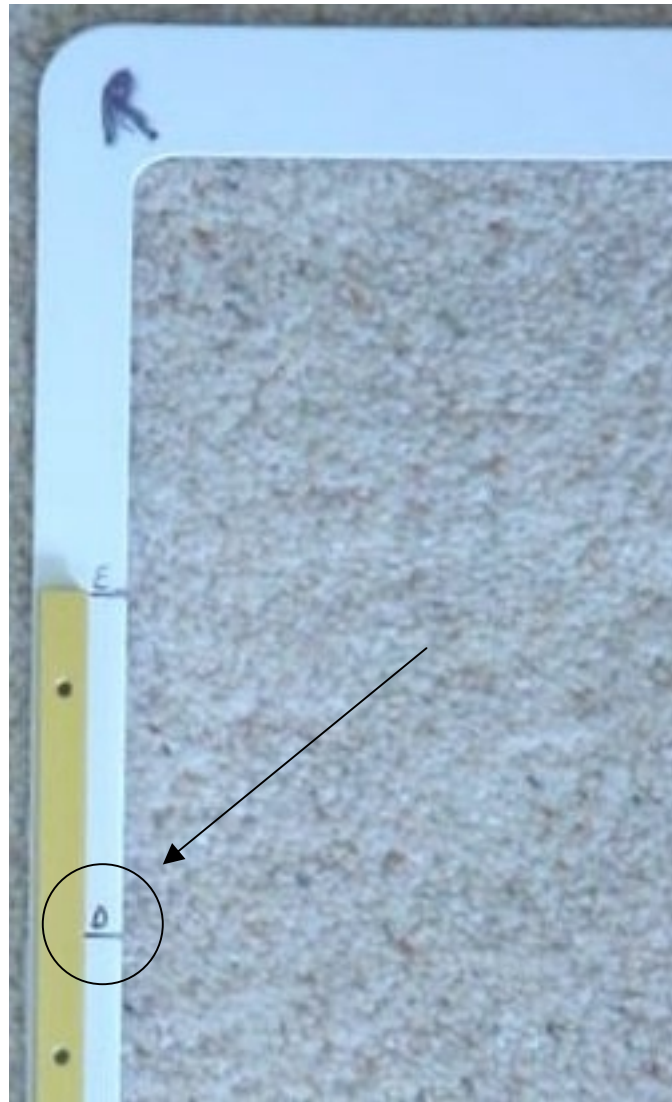
Now let's move onto the next marking.

It is most important that you are extremely accurate with all your measurements as these affect the outcome of your embroidery in this hoop.

Take your ruler and measure down from the line **E** that you have just drawn.

The next horizontal line must be drawn at exactly 64.5mm or 2 9/16ths inches from line **E**.

Check out the photo below for placement of the **D** line. Make sure that your line looks the same. Mark this line as **D** on the white plastic.

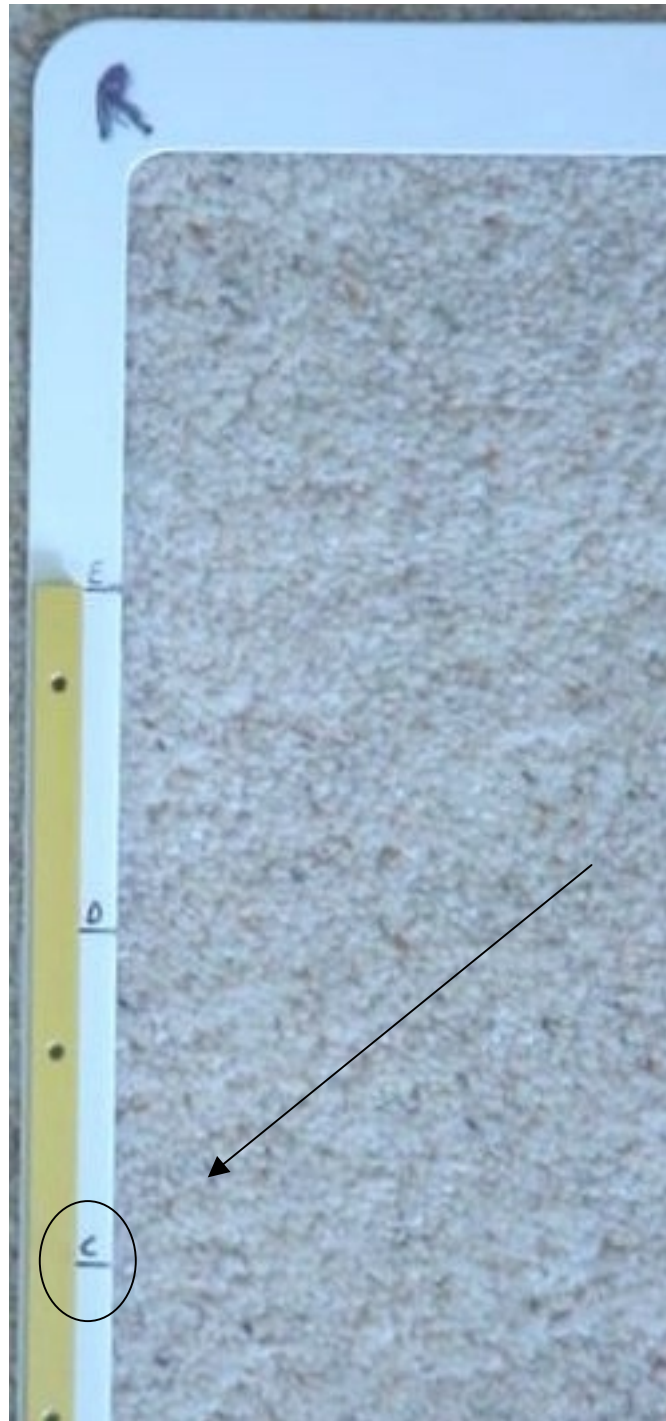


So far, so good. Now - onto the next measurement.

Using your ruler and align it exactly with the **D** line. Measure down another 64.5mm, or if you prefer make your measurements in inches.

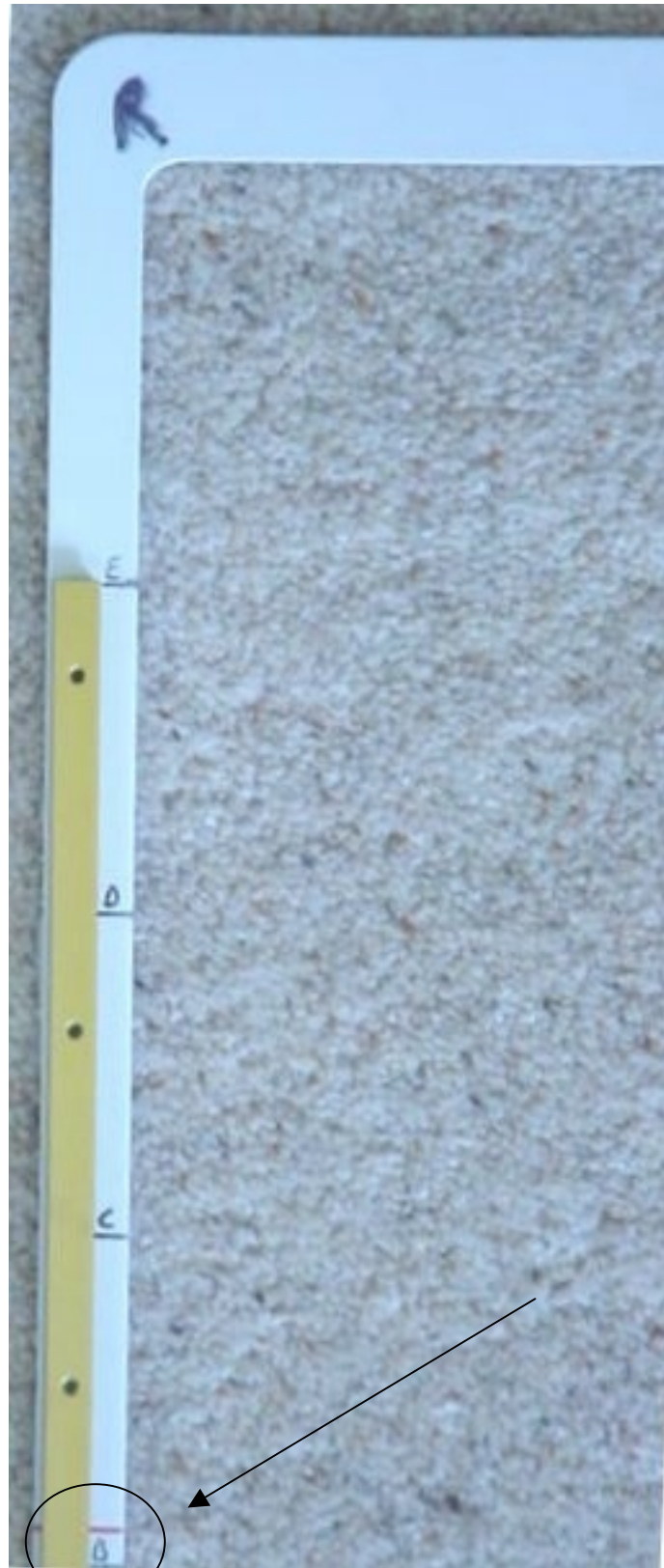
*Personally, I prefer using the **millimetre** measurements as they are easier to mark and measure for accuracy but it is a personal choice which type of measurement system you prefer.*

Mark your next line **C**.



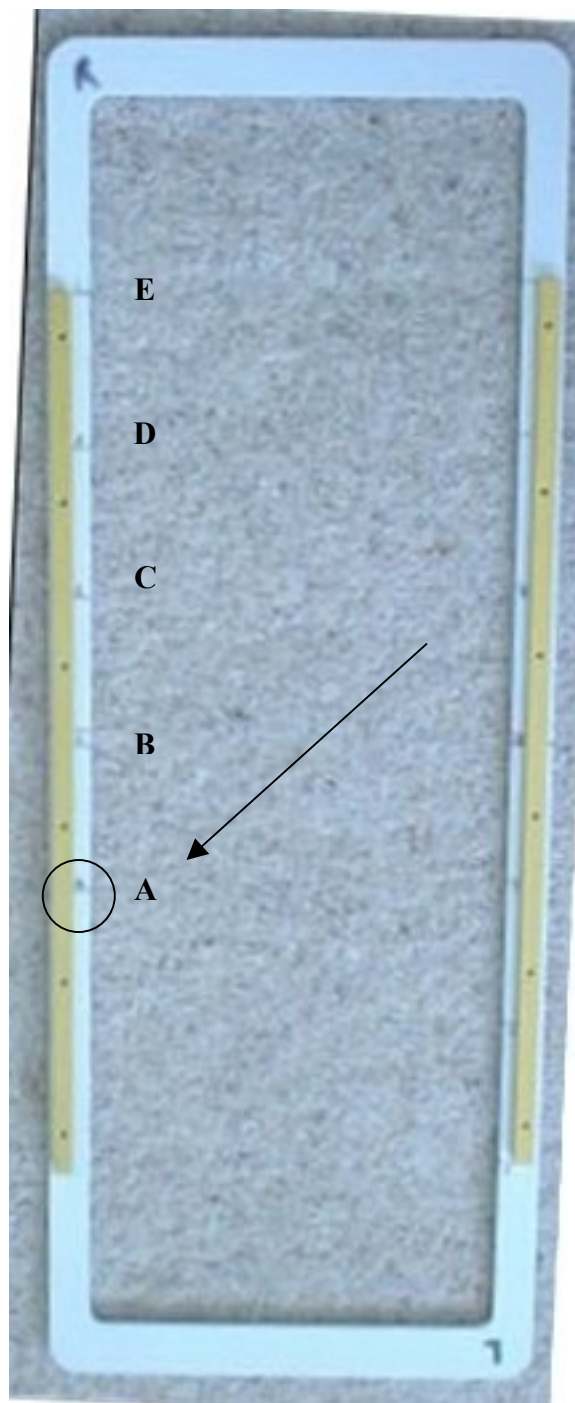
Take your ruler once again and measure 64.5mm down exactly from the **C** line.

Mark the next line **B**.



Once **B** is marked take your ruler and measure down another 64.5mm exactly from the **B** mark.

At this last mark write the letter **A** on the white plastic as shown below in the photo. There are no further markings on this side.



Now your hoop should look like the above photo on the side with the **R** marking on the top left when you are facing the hoop.

This **R** side is now finished.

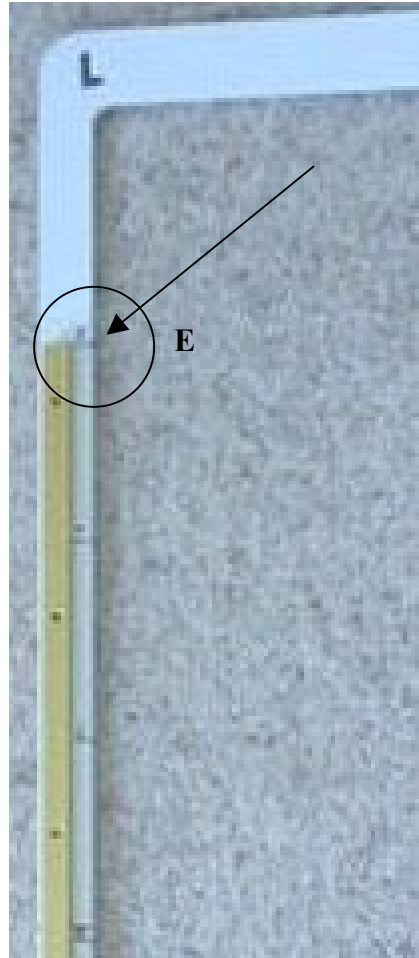
So far, so good! Are you still with me?

Take your hoop and turn it 180 degrees so that the **L** marking is now on the top left hand side as shown below.



Starting at the top of the gold slider bar on the left hand side, draw a horizontal line just as you did for the previous side.

Mark your first/top mark as the **E** position.

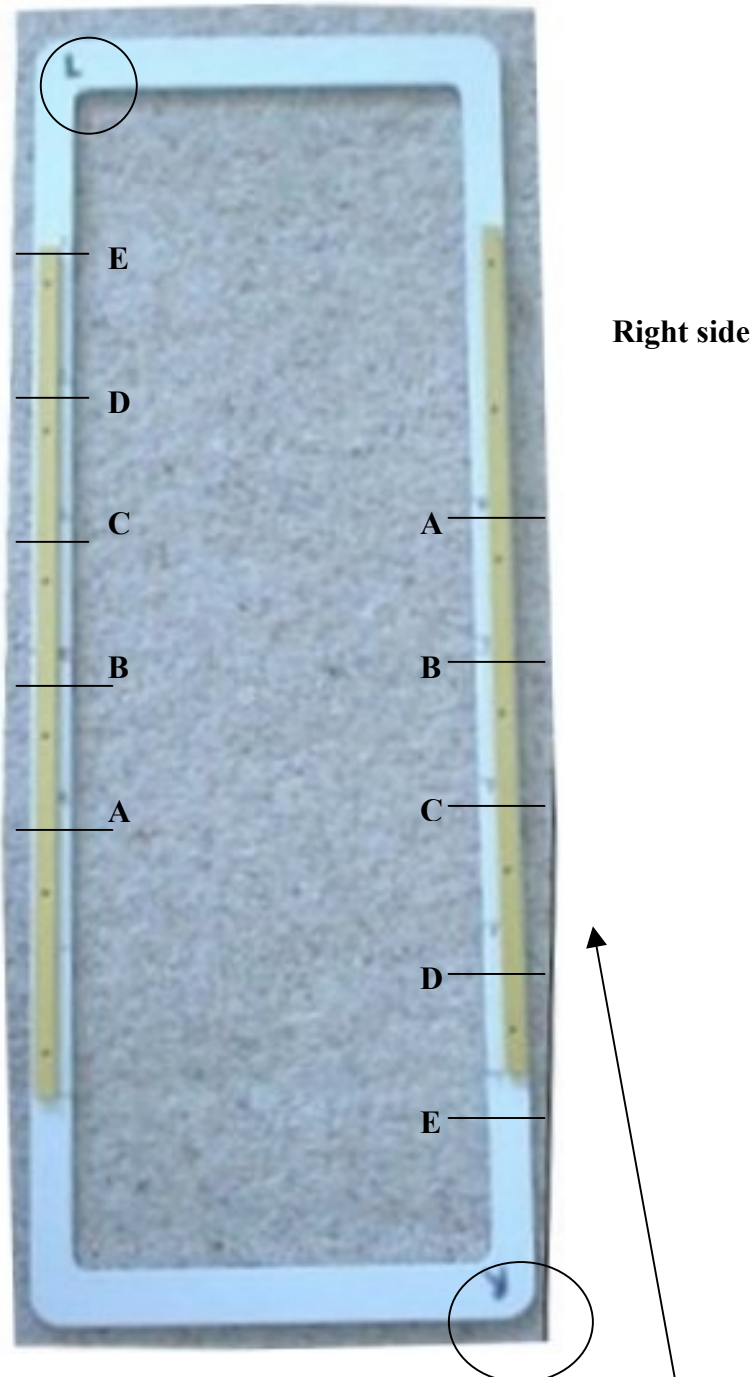


Now measure down 64.5mm from the **E** line and mark your next line as **D**.

Repeat the measurements and markings of 64.5mm as you did on the other side finishing with the A marking.

Your hoop markings should now be finished and should look like the following photo.

I have placed the letters inside the hoop to show you where they belong as the ink markings are too small to see in the photo.



Please Note:

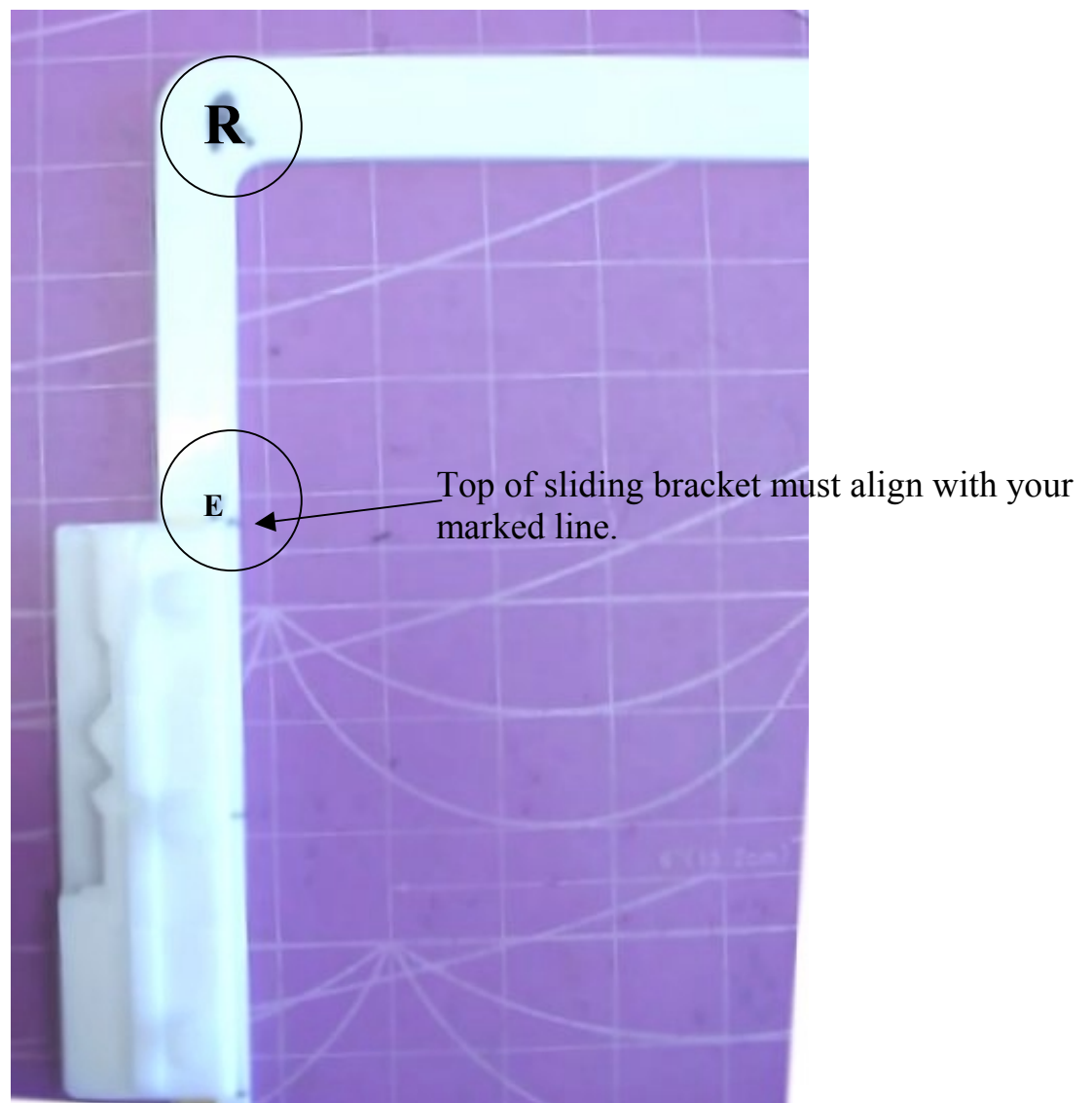
When looking at the hoop from this view the numbers on this side (right hand side) should appear upside down. (I don't know how to turn them upside down so you will just have to imagine that they are!)

Okay, that's the hard part over. As long as your hoop looks like mine in the previous photo and you have all those markings on it you are ready to roll ! Just remember though, that the numbers on one side are always upside down when looking face on at the hoop. On the side you are using the numbers are up the correct way and on the other side they will be upside down. This is because when using the hoop you have to rotate it to use the correct side.

The slider that is included (white with three screws) slides onto the side you are to use.

Embroid has a **left** and a **right** side to the hoop (hence the markings) and when you are instructed to use the **Right** side then you need to loosen the screws and slip the bracket onto the **right side slide rail** and up to the position instructed.

For instance, if a design in Embroid states the position to embroider is **R_E** that means that you must slide the bracket onto the side marked **R** and then position the top of the bracket exactly at the **E** line that you have marked.



Let's do a check-list now. These are the things you should have done

- Placed the stand under your machine in the correct position.
- Slid the hoop support tables under the machine stand.
- Marked the positions on the hoop as described.
- Lightly screwed in the plastic screws into the sliding bracket in readiness for sliding onto hoop.

Footnote.

When you have selected your hoop in Embird Editor for the Super Giant L hoop it All™ you will see that there is an option to “Print Rulers”. These are actually the measurements for the markings on your hoop. However these markings may not be entirely reliable as not all printers print the data the same and the placement lines may not be perfect. That is why it may be better to use the method described above for marking your hoop with a ruler or tape measure.

However I did actually print the rulers on my printer and I found them to be exactly right. But all printers are not as accurate. You could print yours and check if you wished.

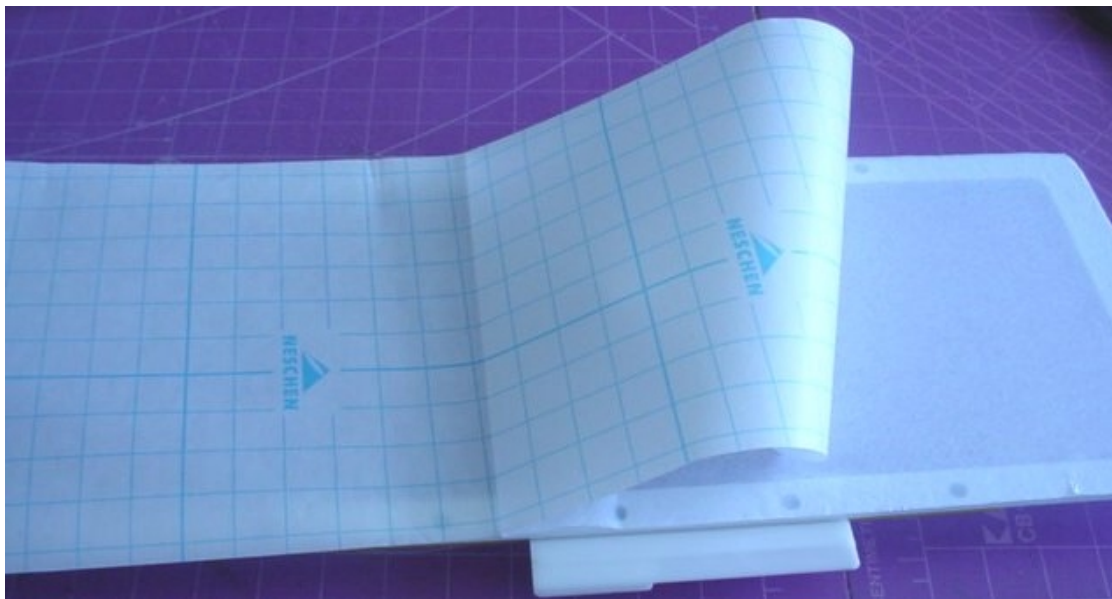
Attaching the adhesive paper to the hoop.

The next part in the process is to attach your adhesive paper that was supplied to the hoop so that you can start on that exciting journey embroidering in this gigantic hoop.

Turn your hoop over so that it is face down and measure out a piece of the paper big enough to cover the whole hoop end to end.

Now start to peel the paper away. Just peel a few inches to start with.

Place the sticky side against the back of the hoop so that it covers the ends. Make sure that you stretch it tightly across the width of the hoop as shown in the photo below.



Peel the paper slowly and carefully making sure you keep it tight as you attach it to the bottom of the hoop. Once the backing paper is removed you can make some minor adjustments to the paper to ensure a tight fit.



Then turn the hoop back over to the right side and trim the excess paper that extends beyond the edge of the hoop.

Now you are ready to place your fabric on the hoop. If you check the hoop you will see some red markings on the hoop that were there before you added your own placement markings. These are the half way points which you can use to align your fabric if you wish.

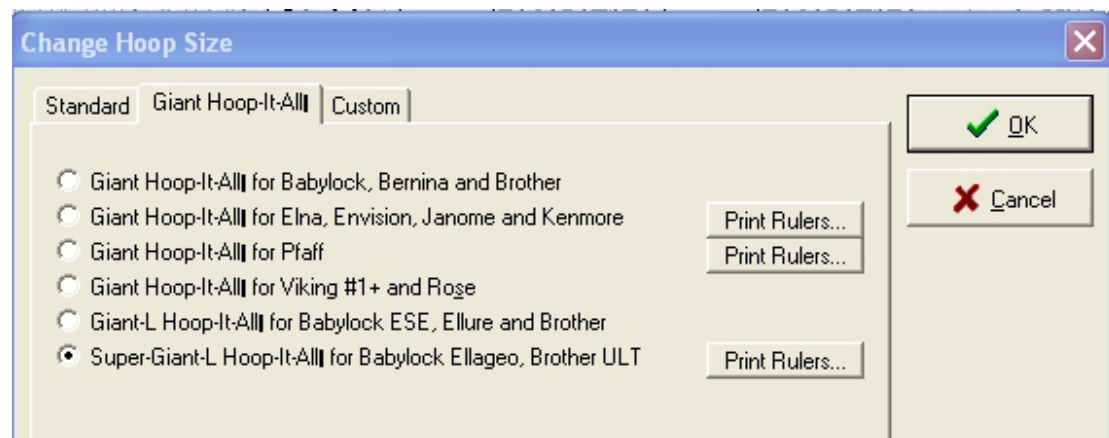
You might find it easier to print templates for the design you wish to use so that you can accurately place your fabric.



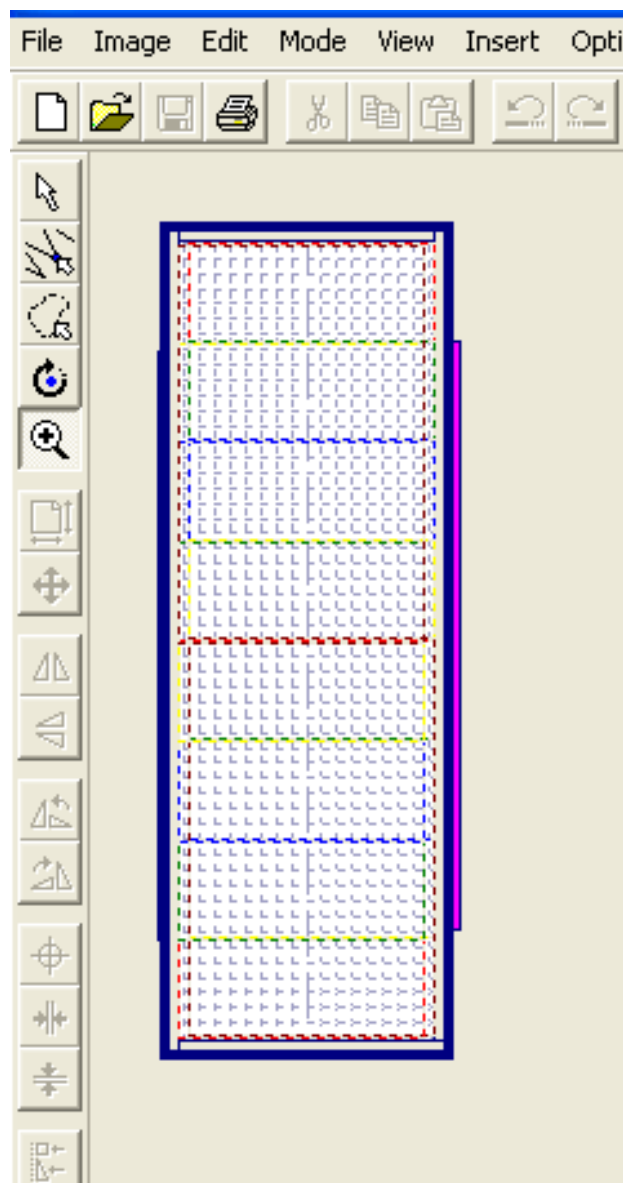
I have placed a piece of de-lustered satin on the hoop on which I am going to embroider a design I digitised in PE Design. This fabric was made into a stand-up collar on the coat for my daughter for her wedding.

Open **Embird Editor**.

Change the hoop size to the Super Giant L Hoop It All™



Click **OK**. The image below should be on your screen.



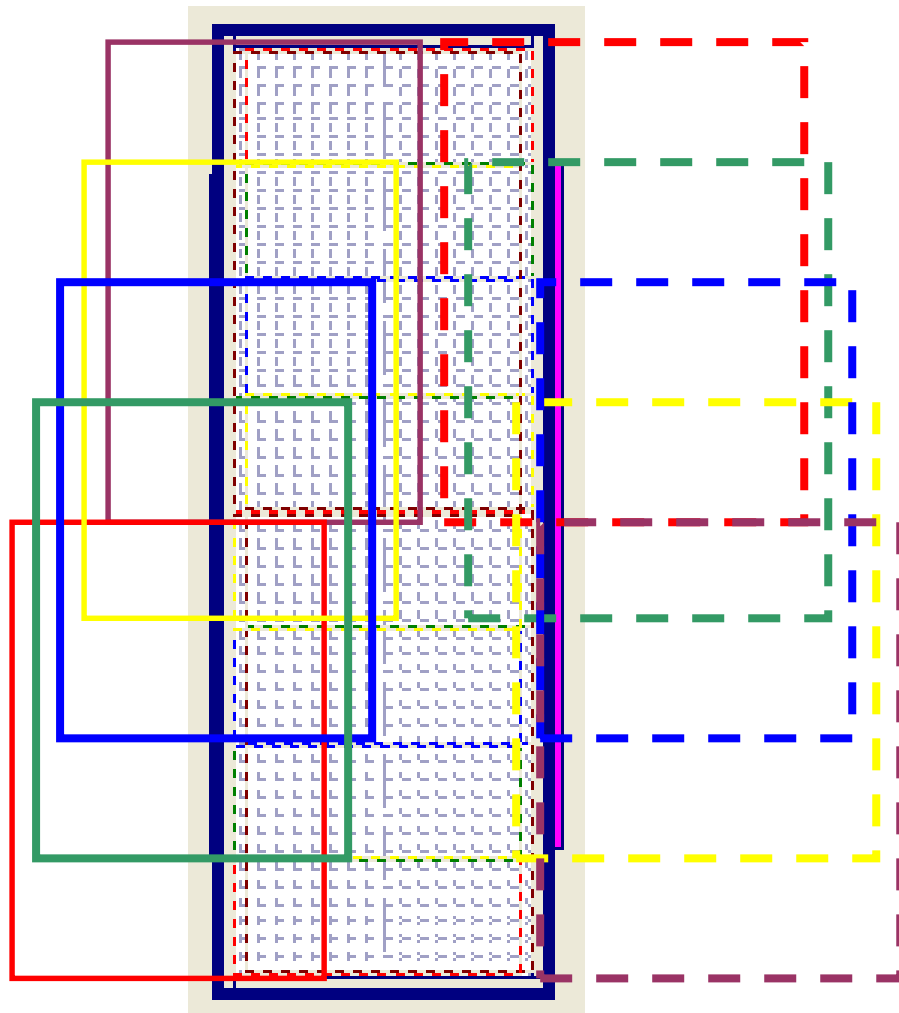
If you have not used this hoop before or a GHIA™ product you will be unfamiliar with the layout of this hoop.

It is very similar to the Multi-position hoop that Brother has for the 8500.

This hoop has defined areas that are marked in by colours. To use the hoop you may place designs anywhere in the hoop area as long as each design or part of the design fits within the boundaries of one of the coloured areas of the hoop. Each hoop area crosses the boundary of another hoop area thus making it easy for you to match up designs you may have split. There are five different hoop markings in this hoop. Each marking overlaps another marking and as long as you place your design wholly within one of the markings you will be able to use the design.


Unfortunately you will not be able to place one design completely the length of the hoop without splitting it first. However a very large design may be split and then re-joined to fill the hoop.


The areas are as follows:



See in the illustration above how each different hoop colour overlaps another one. You will also see how each colour does not actually exactly match another marking. This gives you a lot more leeway when lining up your designs.

I know it looks a bit like a “dog’s breakfast” but if you look carefully without getting cross-eyed you will see the definite markings.

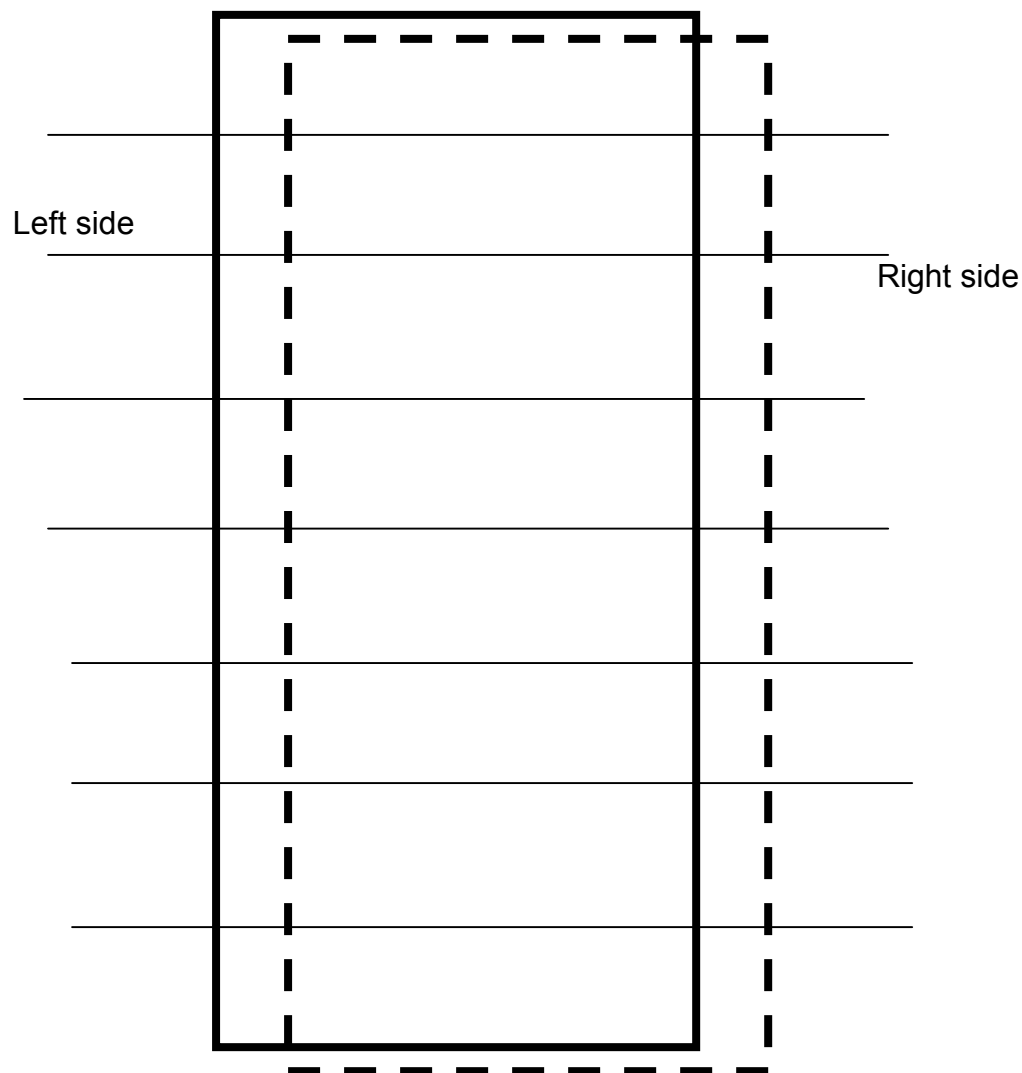
On the **right side** of the picture of the hoop above you will see dashed lines in each of the colours. 

On the **left side** you will see solid markings of the colours. 

All the dashed lines as in the picture above are the right hand side of the hoop as you are looking at it.

All the solid lines as in the picture are on the left hand side of the hoop as you are looking at it.

The hoop lines overlap on the right and the left sides and they also overlap throughout the length of the hoop.



In the example above you can see the right of the hoop and the left of the hoop and the approximate markings the length of the hoop.

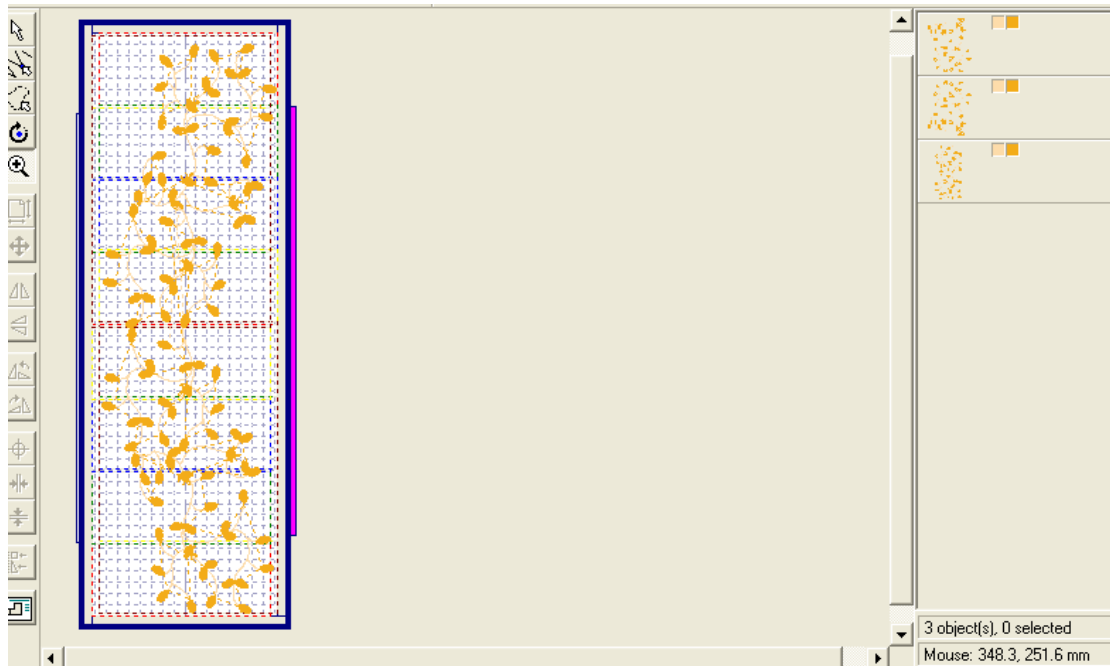
When you place a design into this hoop using the **File/Merge** command in Embird, the program decides whether the design is within the markings on either the left or the right side of the hoop and notes that position accordingly in the file name when you save the design.

Go to **File** then **Merge**.

Choose the first part of your design.

For each remaining parts of your design to be sewn use the **File/Merge** command. I have merged three files in the example below.

I merged the two designs that are to be sewn on the outer areas of the hoop first and then lastly I merged the centre piece of the design. It is better to sew the middle last in this case so that it will sew over any stray edges in my design.



Each part of the design must fit wholly within one set of the markings on the hoop. If the designs are outside the boundaries you will get a warning message when you save.

Notice that there are three separate thumbnails showing in the colour boxes on the right hand side representing the three files that I have used to create the design.

Look carefully at the picture above and you will see how the designs are placed in the hoop. The designs follow the shape of the collar I was embroidering. Because of where the designs are placed in the hoop Embird will decide that the designs at the top and the bottom of the hoop are on the **right side** of the hoop and the centre design is on the **left side** of the hoop. If you look carefully at the illustration above you will see that this is the logical way for Embird to “read” the placement of each of the three files.

To align the design in your hoop it is easier to **zoom** in on your hoop.

Then use the **Select** Tool and select the part you wish to move by clicking on the thumbnail on the right of your page. Your design will now have its selection boxes around it. Move the design to align with any other designs on your page if you wish or to move in small increments hold down both the **SHIFT** key on your keyboard and the **directional arrows** at the same time.

When you have finished your adjustments to your design choose the **Select** Tool and click in the area outside the hoop to de-select the design so that no areas are selected.

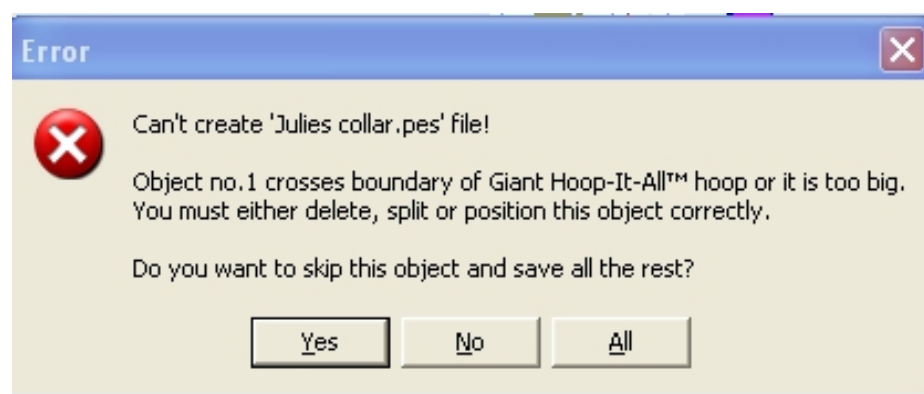
Go to **File** and then **Save As**.

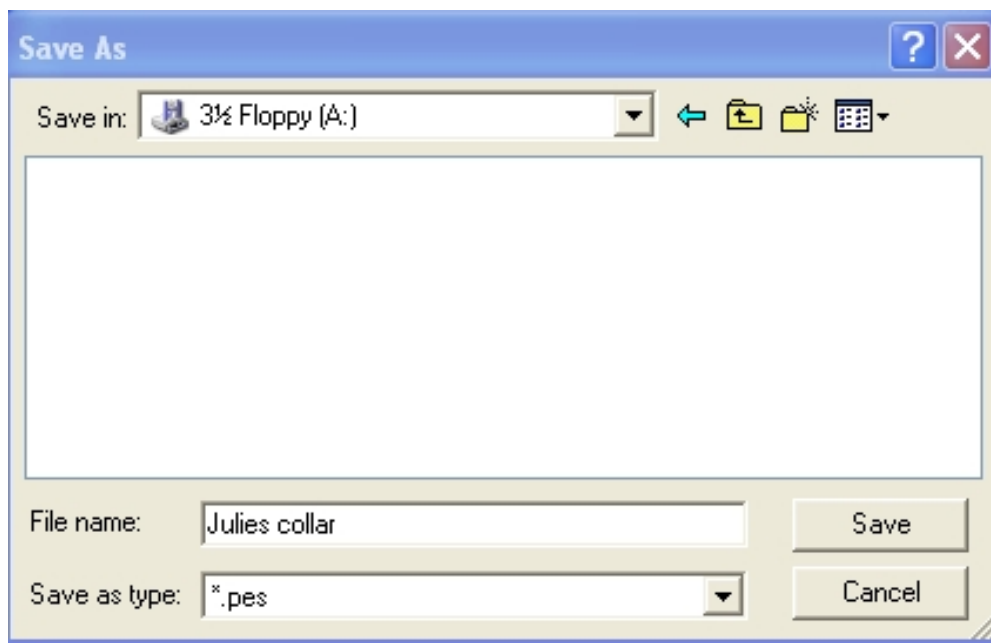
Save to your floppy disc if you're going to embroider the design immediately or save to your C drive if you wish to leave a copy of the design on your computer.

Choose your format (**PES**) and click **OK**.

Give your design a name and click **Save**.

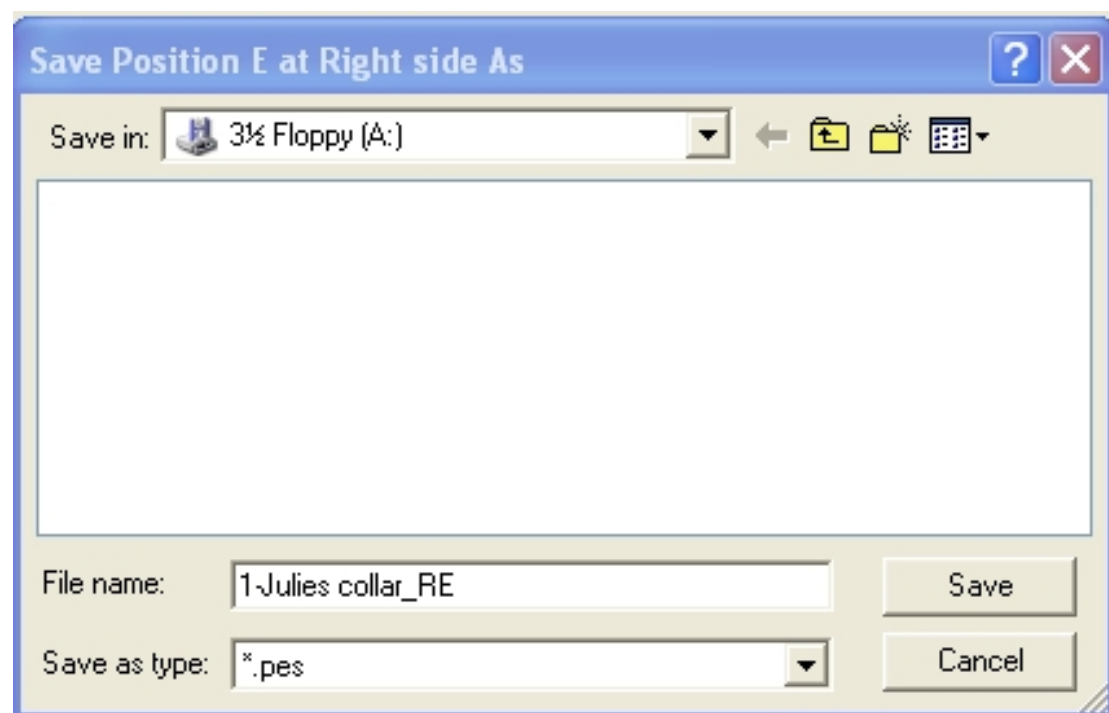
If you get an **Error** message you will have to move your designs as they will not be within one of the hoop boundaries. However Embird will tell you which design needs to be moved as in the example below. This error message refers to Object No 1. Move your design and try saving again





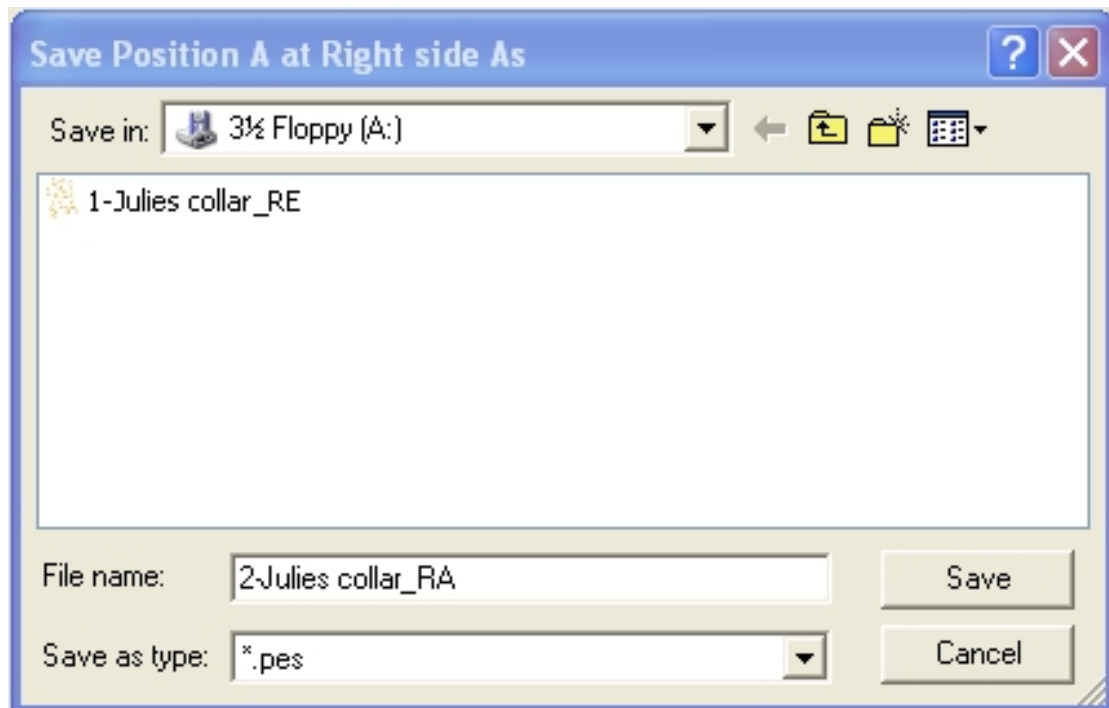
Now you will have a series of **Save As** boxes appear. These are saving the design pieces in the positions in which they are to be sewn.

As each “**Save As**” box appears add a number to the beginning of each file name starting with the number 1. When the design is copied to your floppy disc the designs come up in the correct order on your machine. This is especially helpful if the design pieces all look similar as in the design I created.

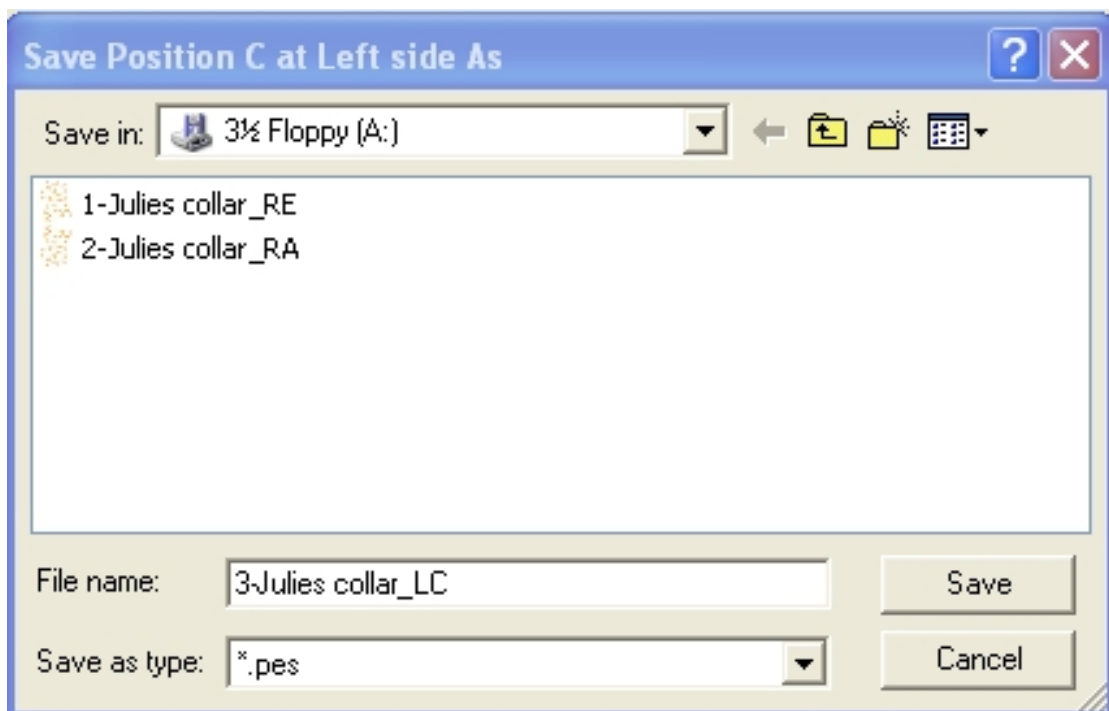


Notice that the name of the box above is “**Save Position E at Right side As**”.

This is telling you where this first design is to be placed in your GHIA. You will also get an option to print the positions as well.



The box above shows the next position in which the design is to be embroidered. Change the file name so you have a number 2 in front of the original name. Click on **Save**. The next box will appear.

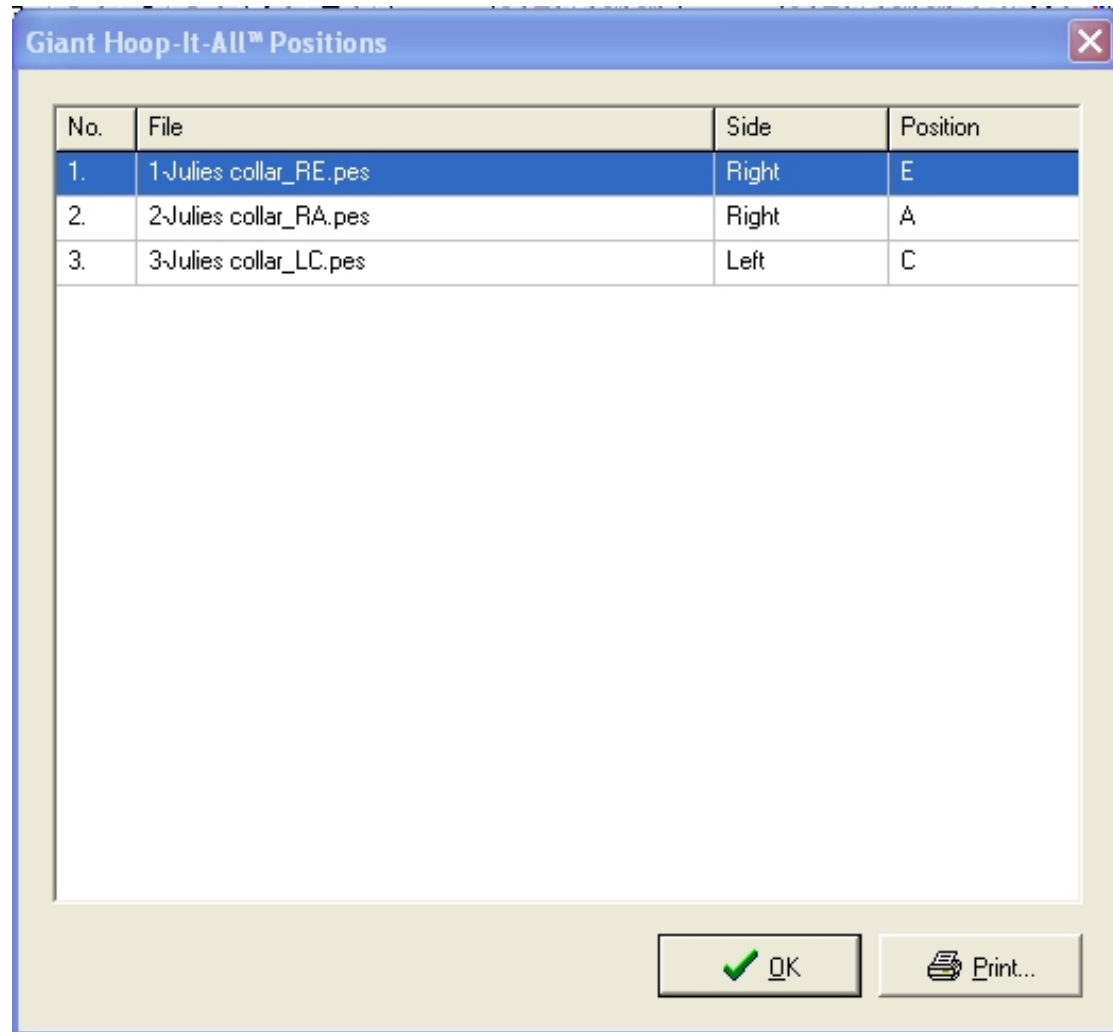


Change the number to 3 and click **Save**. This is the last position for this design.

Your embroidery positions are :

- Right side E position
- Right side A position
- Left side C position

The box below now appears showing you the positions. Choose **Print** so you have a record of the positions for when you are moving your hoop.



Your designs are on your floppy disc in the correct order and you have your sheet with the GHIA positions printed out.

All it needs now is for you to pop your floppy in your machine and put your hoop on the embroidery arm.

Place your floppy in your machine and press Embroidery Edit. (*I always use Embroidery Edit, no matter what.*)

Press the icon for the floppy discs.

Once your designs are showing press the first design in the line of designs. The designs should be showing on your machine in numerical order as this is what I intended when I suggested you place a number in front of each file name and position.

I could be wrong about this but I just wanted to make sure I would get the designs in the right order on my machine and as the machine does not show file names only pictures of the files. As all of my design in this example look similar I did not want to sew out the order incorrectly – hence the numbers. Confused? It's just a theory....correct me if I am wrong.

Once you have the first design on your screen press

1. **Set**
2. **End**
3. **Sewing**

Now place your hoop on your machine in the first position. (Right side Position E as shown on your printed sheet) Make sure that you do not have your machine near a wall or any obstructions as the hoop is very large and you do not want to knock it with anything when it starts to move.



You may float a piece of tearaway stabiliser under the hoop if you prefer.

Press the **Start** button on your machine and begin your adventure.

Once the design has finished the first part loosen the screws and move the sliding bracket to the next position as printed on your sheet. If it is on the same side as the first design then you do not need to remove the hoop. Tighten the screws again.

Now select your next design by pressing **Embroidery Edit** again and deleting the pattern you have just embroidered. Press the second design and press **Set, End** and **Sewing** again. Press **Start** and complete the next pattern.

The most important thing to remember is to check your position against your printed sheet each time and make sure that you have the hoop bracket on the correct side.

Once you have finished this design you may have to change hoop sides. In my example this is where I changed from the right to the left.

To change from the right side to the left side, remove the hoop from your machine, loosen the screws and slide the bracket off the right side. Leave your embroidery intact.

Completely turn the hoop completely so the side with L (left) is on the top left. Slide the bracket back on the hoop and into the position that is on your printed sheet. Tighten the screws. Pop the hoop back on the embroidery arm.



This is the design finished and still in the hoop but the hoop has been removed from the embroidery arm.

While embroidering with the heavy sticky stabiliser I keep a piece of cotton wool with a small amount of nail polish remover close by to wipe the needle from time to time and the sticky residue can build up on it. Only wipe the needle when the machine is stopped!!

For my daughters recent wedding I embroidered the collar and also the cuffs on her coat that she wore over her dress. As she only had a small amount of chiffon on the bodice of her dress and she wanted it repeated on her coat I decide I would replicate the original embroidery myself.

I scanned the fabric on my flat bed scanner and used the image as a template in PE Design/Layout and Editing.

I digitised the design and then used Embird to lay up the pattern in the Super Giant L Hoop it All™.

The collar was embroidered in the one hooping in this wonderful hoop. Then I repeated the design using just two of the embroidery patterns on the cuffs. Everyone at the wedding (except my friend Bryden....) thought the collar and cuffs were the same fabric as the bodice. I have included a picture of my project below.





Of course you can also add your lettering from Embird in the same manner. As long as your lettering fits within the boundaries of the coloured hoop positions you will be able to create great long piles of text as well!! The mind boggles with what you will be able to do.....

That's about it for the hoop. It is a wonderful tool. If you have my videos on Embird you will know that I said that I had never seen a GHIA™ product before and had to rely on what I knew about them to write the lessons. These hoops are not available here in New Zealand to my knowledge and with our poor exchange rate they are very expensive for us to purchase.

If it wasn't for a dear friend from the USA I still would not have been able to have first hand knowledge of this hoop. For her kindness I am very grateful. She sent me the hoop so that I could use it on my machine. For this I send my heartfelt thanks.

The hoop arrived at the most convenient time for me. I had an opportunity to try it out on my daughters wedding dress as you can see by the photos above.

Have fun with this hoop. It may appear scary at first but as long as you double check your hoop positions against the printed Embird hoop positions you will be fine. Double checking before you press the Start button on your machine will be the beginning of you making such 'oh - so large designs'. Such fun!

Have a great time with the hoop.....

Take care.

Carolyn



About the Author



Carolyn Keber

Carolyn has been involved with sewing since 11 years of age. After selling her successful Sportswear manufacturing business in 1995 she took up her love of hobby sewing again and discovered the joy of machine embroidery.

As technology improved and machine embroidery became computerized Carolyn embraced this new hobby, but was frustrated by the lack of instruction available. She solved this problem by teaching herself the programs and now teaches others who require her help. She gets a great amount of pleasure out of helping others learn such a wonderful hobby.

Carolyn lives in Auckland, New Zealand with Philip, her husband of 32 years, one of her three children Jenny, (the computer whiz) her two dogs and the cat.

She can be contacted by email at
c.keber@ihug.co.nz

This booklet is published by Secrets of Machine Embroidery. For more information and tutorials by Carolyn, please visit our website at <http://www.secretsof.com> or email us at office@secretsof.com

© Copyright 2000 secretsof.com All Rights Reserved