

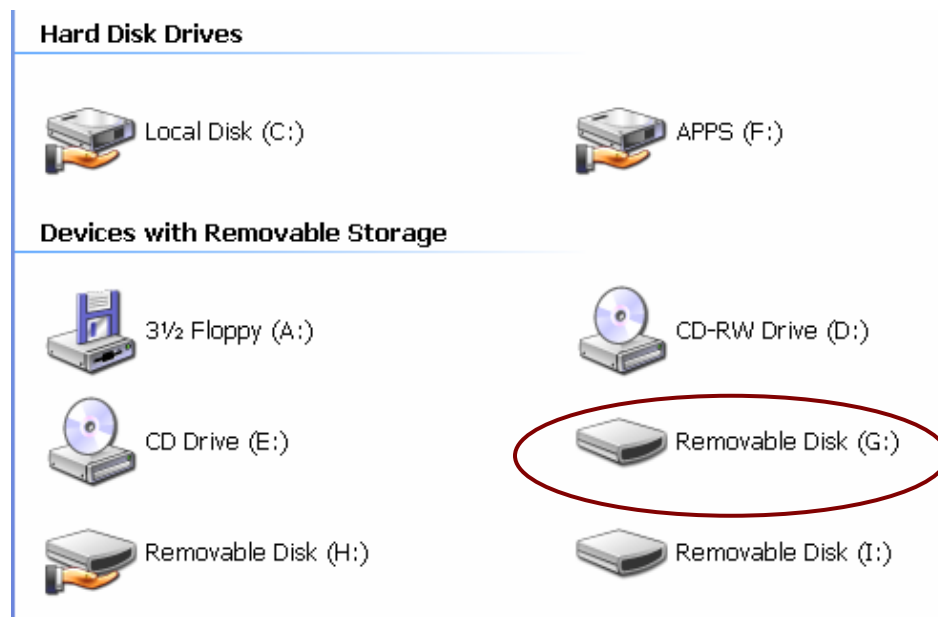
## Saving to Compact flash card for Janome 10000 Users.

These step by step instructions for saving designs from Embird to the Compact Flash card were kindly supplied to me by Ron Cartwright who lives in Suffolk in England. He asked me if I would like to add "my little bit" to them and provide to any Janome 10000 users. I hope they are some help to you. Thanks Ron.

Attach your Compact Flash reader/writer and card, that has been correctly installed using the accompanying software, to your computer.

The installation CD for the reader/writer will come with the hardware. Once installed this Reader/writer will show as a separate drive on your computer.

To check it out go to **My Computer** on your **Desktop**. You should see the **Drive** listed under **Drives with removable storage**.

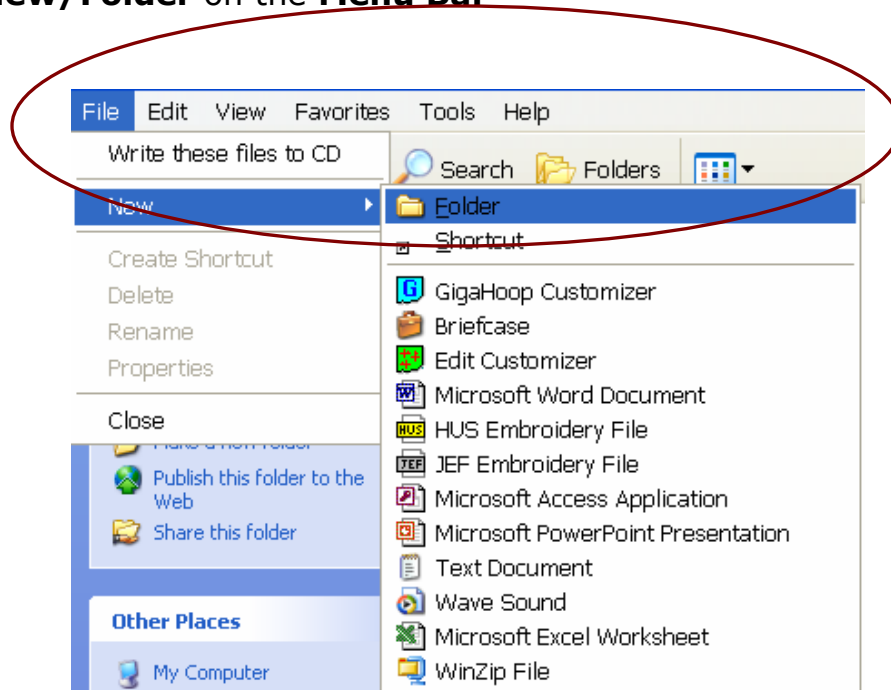


Make sure that your compact Flash card is inserted in the Reader writer box and that it has enough space on it for the designs.  
*\* See notes at end of this lesson for checking space on the reader writer card.*

To use the designs from your Compact Flash card you need to have two special folders created on this card. These folders are then recognized by your Janome 10000 machine when you are ready to embroider. You will need to create these folders on your Compact flash card. You can create the new folders in Embird (see my booklet for instructions) or through **My Computer**.

The following instructions are for new folders created through **My Computer**.

Double click on the **drive** for the Compact Flash card to open it. Go to **File/New/Folder** on the **Menu Bar**



A **new folder** will appear on your drive.



Type the following exactly the same to name the folder

PC\_Link

And click outside the folder to deselect it.

Create another new folder. Type in the following exactly the same

Emb\_Link

***It is very important to name these folders exactly as above as these are the only folders that your machine will recognize when you wish to embroider.***

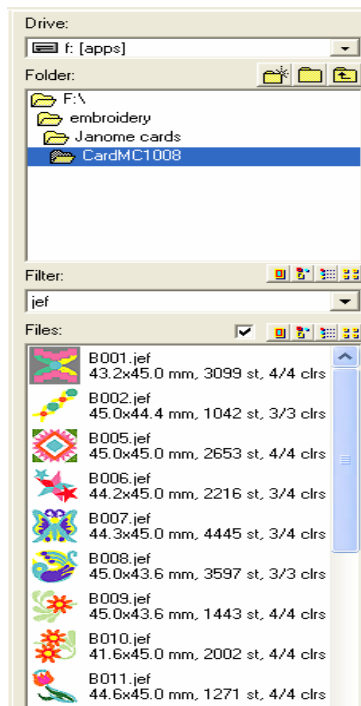
Close **My Computer**

Open **Embroid** so we can make a start on writing some designs to your card.

Embroid **Manager** is the first screen that will open in Embroid.

Change the **Drive** on the top right hand side to the drive where you have your designs stored that you wish to send to your card.

Now go to the **folder** where your designs are kept and double click on it to open it. You will see all your designs listed in the bottom right of the screen as shown below.



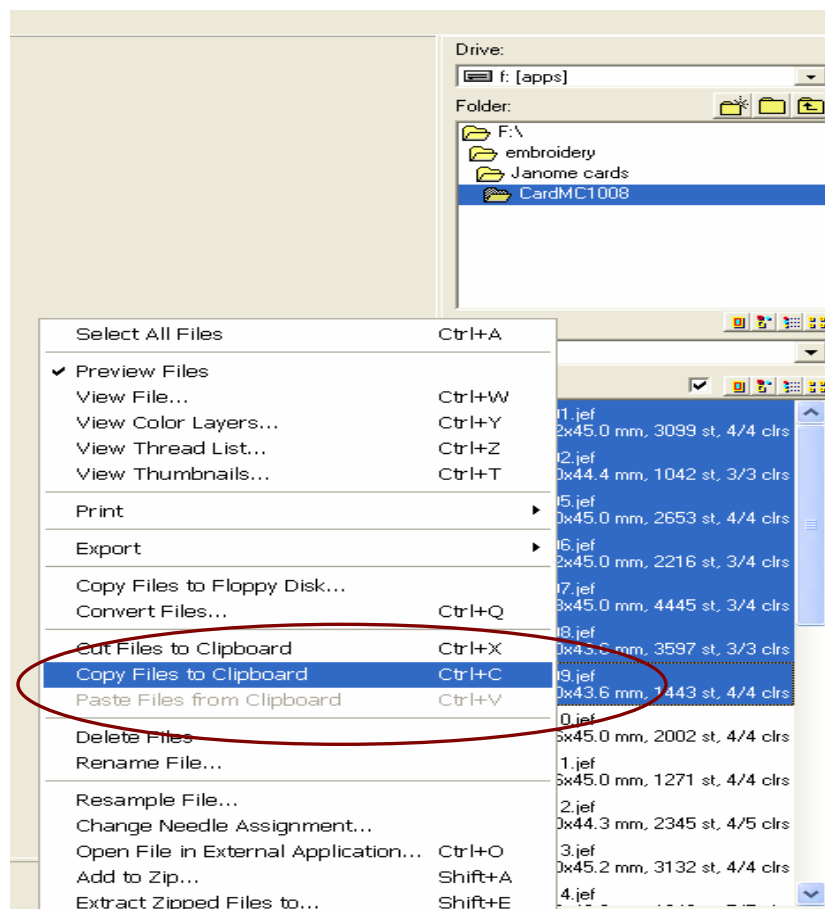
**Select** the designs that you wish to send to your card.

**Please note** that to use these designs in your Janome 10000 the designs must already be in the jef format. If they are not, then you will need to convert them to the jef format. See my Embird booklet if you are unsure how to do this.

To select more than one design for copying you can:

- Hold down the **CTRL** key on your keyboard and click on as many designs as you wish to send even if they are not listed in any order
- Hold down the **SHIFT** key and click on the first design in a line and then click on the last design you wish to use. All the designs between these two will be selected.
- Hold down **CTRL+A** on your keyboard to select them all

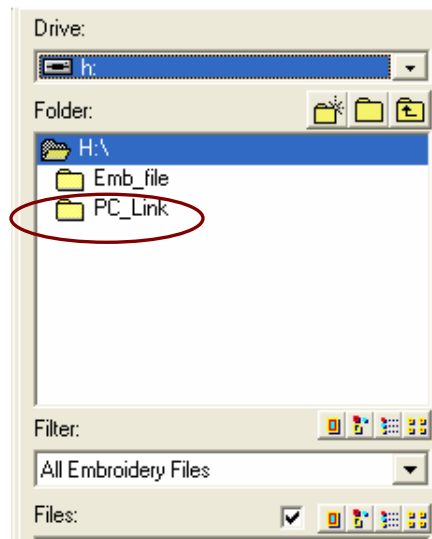
Now right mouse click and choose **Copy files to clipboard**.



Go back to **Drives** at the top right hand side of your screen and change the drive to the drive of your Reader/writer.

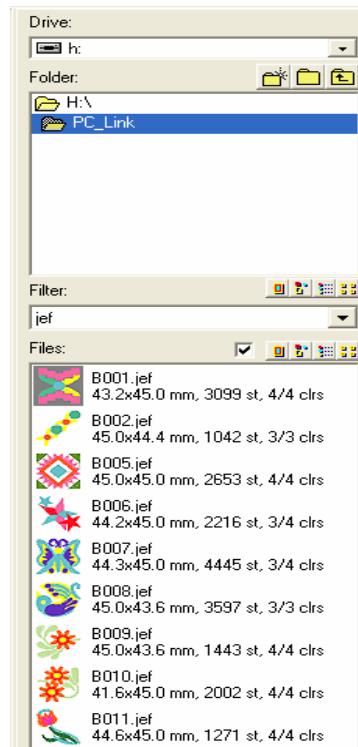


You will now see the two folders you created listed under **Folders**.



Double click on the PC\_Link folder to open it and then right mouse click in the lower right hand panel and choose **Paste files from Clipboard**.

The files will now be transferred to your Compact flash card as shown below.



Your designs are now ready to embroider. Just pop the card out of the Reader writer and insert it in your Janome machine.

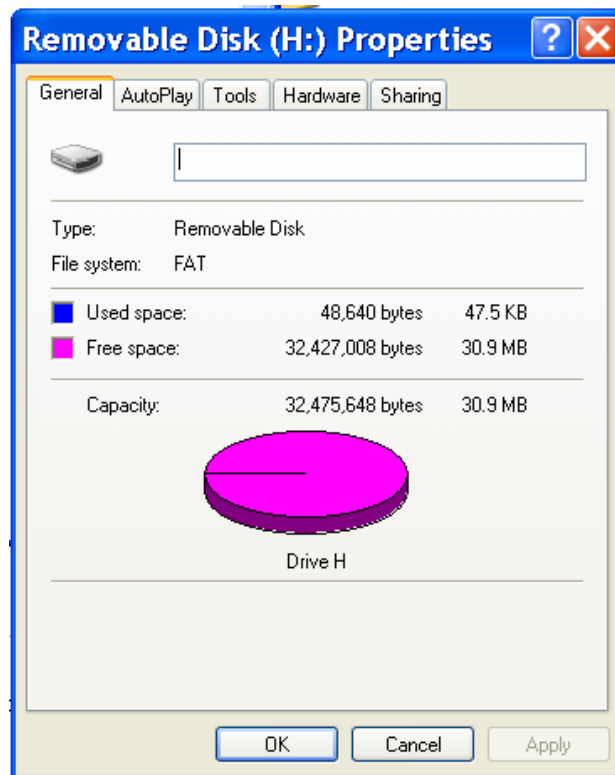
Good luck

Carolyn



## Additional Notes of interest

To check to see if there is enough space on your Compact Flash Card open **My Computer** and right mouse click on the Drive that is your Reader writer. Choose **Properties** from the pop-up box that appears.



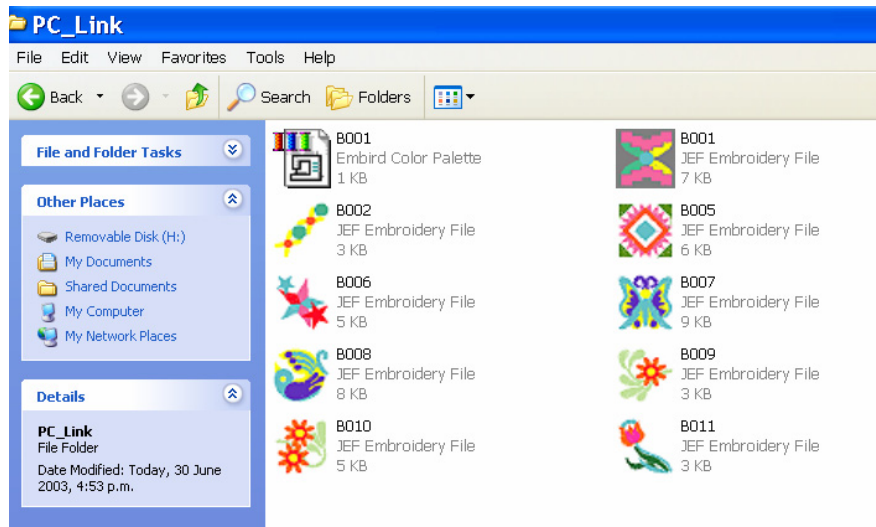
Check the capacity of your disk.

### Disk Capacity and formatting

If the above screen shows that the disk has plenty of space on it then you are fine to write to your designs to the disk. If there is not much space and you would like to free up some then you will need to **delete** some designs.

Click on **Cancel** in the **Properties** screen.

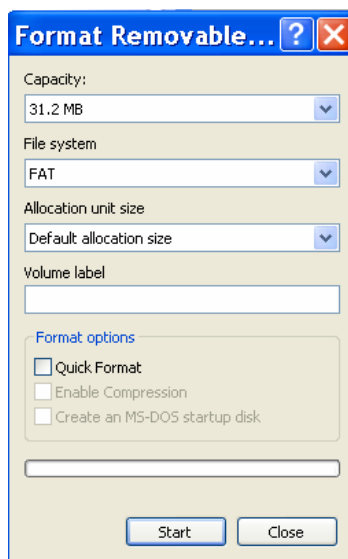
Double click on the drive to open it. Double click on each of the folders to show the embroidery files. Your files will all be showing.



Select as many as you wish and then right mouse click and choose **Delete**.

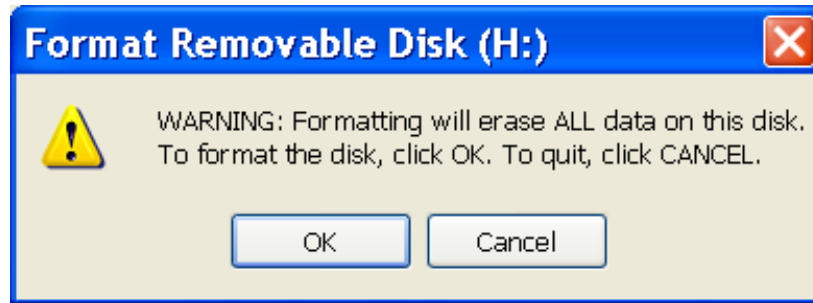
Every now and then you may need to format the card in this drive just to improve the performance of the card itself. (I have to re-format my Elna card regularly and it uses a very similar system)

To **format** the card open **My Computer** and select the drive for the Flash card reader writer. Right mouse click and choose **format** from the pop up menu.



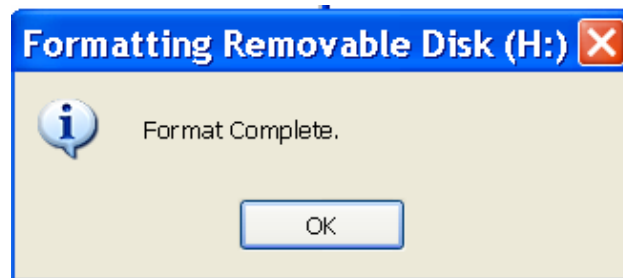
Click on **Start** to begin the formatting. You will be warned that all the files will be deleted.





Click **OK**.

When the drive has been formatted the following screen will appear.



You will then have to create those new folders once again. However you may never need to format this drive at all. Only format it if you are having trouble with your card being recognized by your machine. My friend Bryden has never had to format her card for her Janome 10000 at all but I have had to format mine for the Elna. I thought I would add these instructions here "just in case". You never know –

