

## **Ananda's Divine Designs – 3D Cherry Blossom Flowers - Freebie**

*(distributed by Secrets of Embroidery)*

This project includes Cherry Blossom Freebie design for the 4x4 hoop.

You will also receive an additional design to make the Felt Flowers from. Be sure to stitch out and prepare your Felt Flower pieces before embroidering the Cherry Blossom Freebie.

See Divine Designs for more Cherry Blossom Designs so you can create a stunning cushion like the one below.



**Making the 3D Cherry Blossom Felt Flowers.** (all pictures shown are for the large hoop Cherry Blossom Designs but the process is the same)

Hoop heavy weight cutaway or tearaway stabilizer.

Use this design in the hoop size you will sew the Cherry Blossom designs in.

- BlossomOutlines-4x4

Embroider as follows.

1. *Appliqué Material (one layer of white or pink felt fabric)*
2. *Appliqué Position (trim fabric)*
3. *Black (or contrasting color to your white felt to show the outlines of the flowers)*



Remove felt and stabilizer from machine.

Use a sharp pair of scissors, and carefully cut out each Felt Flower. Cut just inside the stitched outline. It takes a little time to cut them out but is well worth the effort. Take care to put a little “V” inside the rounded bit of each petal to give the distinctive blossom shape.

You should have two completed Felt Flowers.



**Make sure you have completed all flowers before starting the next step.**



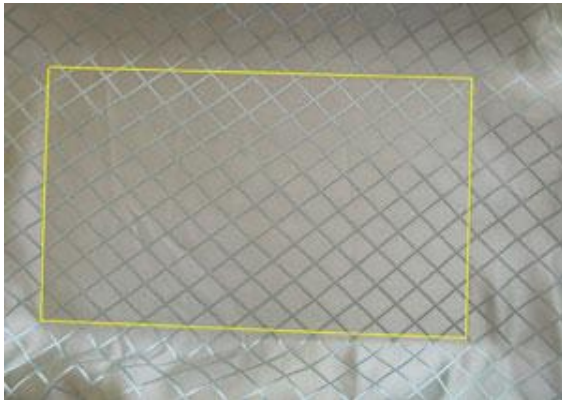


**Cherry Blossom Freebie** (directions and color chart – *All thread colors to stitch are numbered in italics*)

(All pictures shown are for the large hoop Cherry Blossom Designs but the process is the same.)

1. *Tackdown Stitch Square to mark fabric position in hoop.*

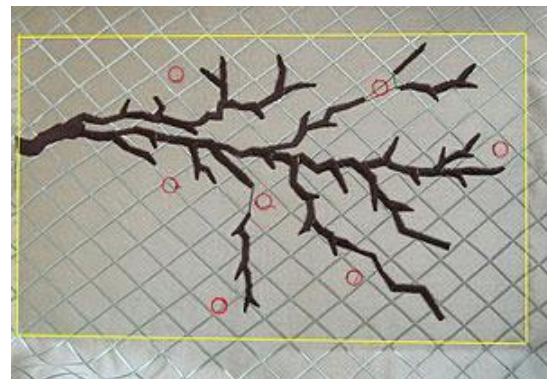
Spray back of fabric lightly with spray adhesive, and position carefully overtop of tackdown stitch square in hoop.



2. *Tackdown Stitch to hold your fabric in place. You will remove this later so it can be any color you choose. (shown in yellow)*

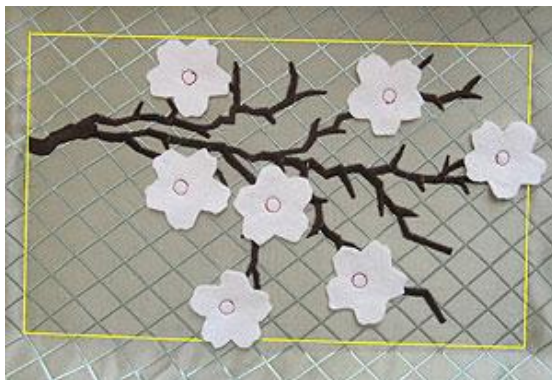
3. *Dark Brown*

4. *Flower Position Placement Outlines*



Carefully place cut Felt Flowers centered over each Flower Position Placement Circle outline.

Use spray adhesive, tape or a glue stick to hold in place. Don't use pins.



5. *Flower Position Tackdown Stitch*

This color holds the flowers in place. When stitching watch carefully and stop/start machine as needed if it folds the Felt Flower Petals over when moving from one to the next. It should start in the center of each flower.

6. *Dark Pink*
7. *Light Pink (or yellow for the fringed centers)*
8. *Dark Pink (or light pink for the center of flowers)*



### **Cutting the Fringed Centre for each flower.**

Turn design over to reverse side so you can see the bobbin thread.



Use a sharp pair of scissors, or quick unpick and carefully cut along the bobbin thread (shown in white below). Be careful not to cut any other thread. Brush cut bobbin thread away.



Turn design back to top side. Carefully pull fringing thread through to the top side with the edge of your scissors.

Your fringed flower is now complete.

Repeat this process for all fringed flowers. Your design is now ready to be used for a wall hanging, cushion or other home décor item

All Digitized Designs and Appliscape Projects are Copyrighted by Divine Designs and are only for use by the person who originally purchased the designs. Digitized designs are not to be shared, swapped, duplicated or sold in any way. Designs in there stitched out form can be used on personal items, gifts and items for resale. The digitized design itself remains the property of Divine Designs.

Many thanks  
Ananda Smith

Divine Designs <http://www.secretsof.com/content/divinedesigns>  
mailto: [ananda@secretsof.com](mailto:ananda@secretsof.com)

I would love to see some finished projects with these designs. Feel free to send photos of them to [ananda@secretsof.com](mailto:ananda@secretsof.com)