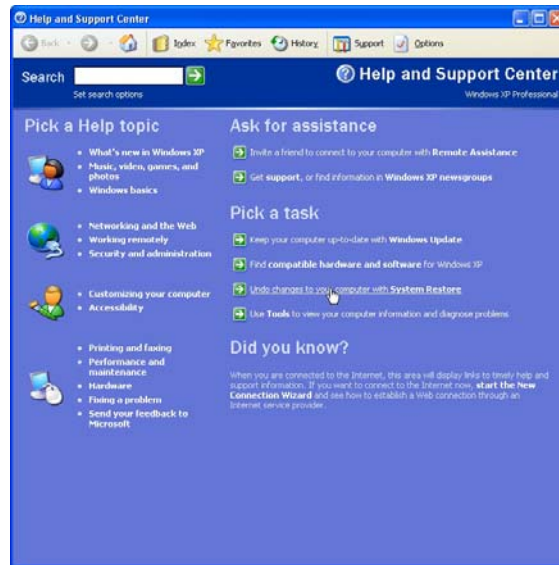


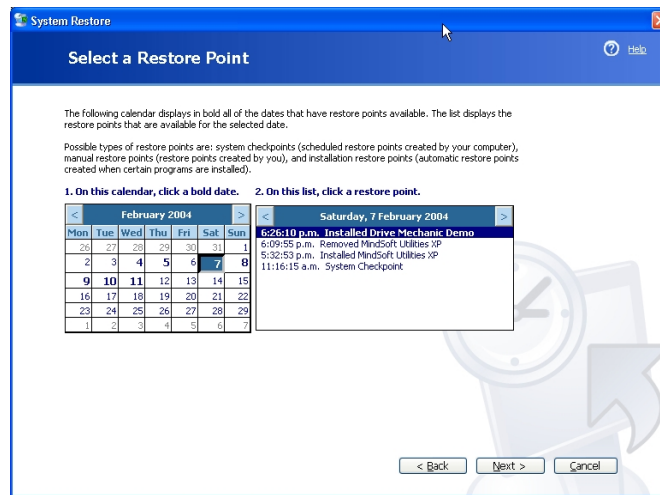
If you have more than one drive letter on your hard drive, you can set each drive's restore function separately. In the list of available drives, click on the one you want to adjust and click the **Settings** button. This brings up another window that lets you adjust the amount of disc space that System Restore is allowed. The minimum amount of disc space that System Restore needs is 200MB, so keep a check of your system drive or Drive C: to keep it well stocked with free space.



Invoking the System Restore option can be done from the Start button. Choose **Help and Support** from the right hand list. Under **Pick a Task** choose **Undo changes to your computer with System Restore**. System Restore restores your operating system and applications only; it does not save and restore any files.

For example, if you accidentally delete a Word document, you cannot use System Restore to get the document back. Also, System Restore does not affect other files, such as e-mail messages and web pages.

The Restore Wizard starts and presents you with a calendar window to choose an appropriate restore point from. It very clearly tells you what programs and drivers were loaded and at what time as well, giving you the exact moment that things went wrong. Simply choose from the list and click **Next**. XP will reboot your computer and remove the problem allowing you to continue as if nothing had gone wrong.



If for some reason the restore does not go according to plan, you can reverse the System Restore. What happens if Windows won't start? This can sometimes happen if you install a driver that you think is the correct one but XP insists that it is not. You reboot the computer and you can't get past a black screen.

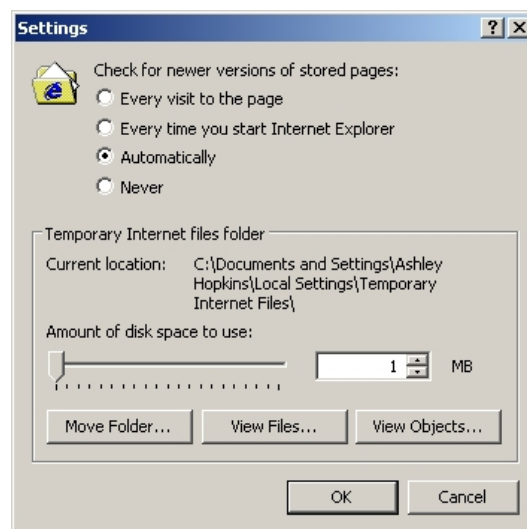
Use your reset button and when the computer starts to boot up, hold the **Ctrl** key or **F8** down on the keyboard. Choose **Start in Safe Mode**. Windows will load without its usual driver set. Once Windows boots, a screen appears asking whether you want to do a diagnostic check of the system. Click **No**. System Restore will automatically start.

Once again, restoration does not affect current documents, files, e-mail messages, and so on. However, if you installed an application after the last restore point was made, you will need to reinstall that application.

## The Internet Cache

As you visit Web pages and return to ones that you have already been to, you will notice that they load faster. Internet Explorer stores the files that are required to view the page on your hard drive, which is a lot faster than getting them back off the Internet.

To check these *cache* (pronounced *cash*) settings, and make adjustments to them, open **Tools | Internet Options** and on the **General Tab**, in the **Temporary Internet Files** box, click on **Settings**.



Use the sliding scale or type a number (in megabytes) in the box to adjust the storage space.

You could have this set at a very low 1 MB (as above) and have a separate cache on another computer that is dedicated to this task. This makes Internet work faster. Large institutions like schools, universities, and businesses which use network systems will have one of these, called a *Proxy Server*. When one employee accesses a certain Web page and it is cached, another employee can take advantage of that same cached page on a completely different computer. It saves money when you are paying for the amount you download off the Internet.

You can move the whole operation to another hard drive or location if you click **Move Folder**.

At the top part of this dialog box, you can adjust the way in which the page is refreshed when you next access it on the Internet. The default setting **Automatically** is fine. If you want to play with this setting, here are the options explained.

- **Every Visit to the Page:** This is only good for rapidly changing pages like news sites. It forces a new download for every visit of every page.
- **Every time you start Internet Explorer:** This option checks for changes only when you restart Internet Explorer. Pages that are visited during the current session are not checked.
- **Automatically:** This is the default setting and works for most situations. It tries to be really clever and decides your browsing habits for you based on Web activity.
- **Never:** This is fairly obvious. Internet Explorer will always use the stored version of the Web page where possible to display the information. You can always click on the **Refresh** button (two green arrows next to the Home page button) to reload that page. Sometimes the Refresh button doesn't refresh the page properly, so there is another option to refresh. Hold the **Ctrl** key down while you click on the **Refresh** button (or press **Ctrl + F5**).

### ***Configure Internet History***

The **History** button is located to the right of the Media button and is not labeled. Clicking on it will replace your Favorites pane with the History pane. Alternatively press **Ctrl + H**. The History part of Internet Explorer keeps a record of where you have been on the Internet. It is preconfigured to keep twenty days of surfing ready for instant retrieval. It also controls the AutoComplete and the drop down list at the right hand corner of the address bar.